



## **MANDY BARTLE**

*Executive Director*

*The South Florida Community Land Trust*

[mandy@southfloridaclt.org](mailto:mandy@southfloridaclt.org)



Mandy is the executive director of the South Florida Community Land Trust. She has published over 30 reports identifying strategies for distressed areas, resulting in over \$15 million in investment in South Florida's underserved communities. Ten years ago, she organized South Florida's first regional housing conference, first countywide housing needs assessment, and first coalition of businesses, community groups and government to address affordable housing. The efforts resulted in the formation of the South Florida Community Land Trust, where she has served as the Executive Director since 2010.

Mandy holds a Bachelor's from Carnegie Mellon University in Architecture and Urban Studies, where she has completed graduate coursework in Public Policy and Management. She has been a leader on local issues, serving on numerous boards and committees, including most recently as chair of the Fort Lauderdale Affordable Housing Advisory Committee and on the Board of the Community Reinvestment Alliance of South Florida.

## **KRISTA EGGER**

*Vice President, Building Resilient Futures*

*Enterprise Community Partners*

[kegger@enterprisecommunity.org](mailto:kegger@enterprisecommunity.org)



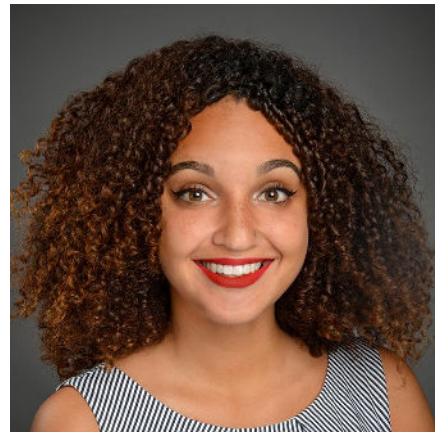
Krista Egger is vice president of Building Resilient Futures at Enterprise Community Partners. At Enterprise, Krista manages national sustainability efforts, including the Enterprise Green Communities Criteria, the nation's only national green building program designed explicitly for green affordable housing construction. She led the technical development and public roll-out of the 2015 and 2020 Enterprise Green Communities Criteria and provides strategic oversight for its certification program and Health Action Plan framework, which pairs public health professionals with affordable housing development teams. Krista leverages the Enterprise Green Communities platform, climate disaster response work and cultural resilience programming to deploy equitable climate resilience solutions across the country.

Krista has more than 15 years of experience leading energy efficiency and healthy housing initiatives with affordable housing stakeholders. Prior to Enterprise, she directed Advanced Energy's Affordable Housing business unit, which provides program and building science expertise. She led the award-winning guaranteed-performance SystemVision program and consulting services with Habitat for Humanity International, NeighborWorks and utility clients.

Krista serves on the Network for Energy, Water and Health in Affordable Buildings' (NEWHAB) Advisory Council, Oberlin EnviroAlums' Steering Committee, and the Building Performance Institute's (BPI) Board of Directors.

### **ALIA GARRETT**

*Sustainability and Outreach Coordinator  
Sarasota County, University of Florida/ IFAS  
[agarrett@scgov.net](mailto:agarrett@scgov.net)*



Alia Garrett is the sustainability outreach coordinator for Sarasota County in the University of Florida/IFAS Extension & Sustainability department. She is responsible for education and outreach projects to encourage sustainability actions in the community. Alia leads planning and implementation efforts for sustainability events and workshops and supports efforts to create a sustainable community across Sarasota County. Previously she worked as Energy Program Specialist for Sarasota Housing Authority, where she focused on energy efficiency and energy equity programs. Alia has a Master's degree in Global Sustainability from the University of South Florida.

### **DAVID GRABER**

*Director, Green Affordable Housing  
Solar and Energy Loan Fund (SELF)  
[davidg@solarenergyloanfund.org](mailto:davidg@solarenergyloanfund.org)*



David is the director of Green Affordable Housing at The Solar and Energy Loan Fund (SELF), the nation's first CDFI Green Bank. He oversees SELF's loan programs for real estate development and preservation. He recently launched the SAGE HOMES program, a fund + incubator for catalyzing emerging developers to build climate-resilient, affordable housing. Previously, he helped launch the SEER loan program for affordable rental retrofits, as part of an Atlanta Housing retrofitting initiative which won a DOE Better Buildings Award. David was recently recognized as a future climate leader by the Aspen Institute.

**SARA HAAS**

*Senior Director, Southeast Market  
Enterprise Community Partners  
[shaas@enterprisecommunity.org](mailto:shaas@enterprisecommunity.org)*

Sara Haas is senior director of Enterprise Community Partners’ Southeast Market. In the Southeast, Sara leads affordable housing preservation efforts and resilience programs. In addition, Sara leads national preservation programming focused on the preservation of small-medium multifamily affordable housing.



Sara earned a Master’s degree from the Georgia Institute of Technology School of City and Regional Planning and received a Bachelor’s from the Emory University Goizueta Business School. She sits on the boards of Open Doors Atlanta and the Atlanta Neighborhood Development Partnership.

**MEGAN HOUSTON**

*Director, Office of Resilience  
Palm Beach County  
[MSHouston@pbcgov.org](mailto:MSHouston@pbcgov.org)*

As the director of the County's Office of Resilience, Megan oversees the County's climate mitigation, climate adaptation, and sustainable development strategies. She has a broad background in energy efficiency, environmental law, and community development. Prior to her role with the county, Megan was a program manager for the non-profit Institute for Market Transformation in Washington, DC, where she developed the organization's multifamily buildings program to remove market barriers to energy efficiency. Megan holds a J.D. from Brooklyn Law School, a Master of Science degree in Urban Environmental Systems Management from Pratt Institute, and a Bachelor of Design degree from the University of Florida.



**CHRISTIAN KAMRATH**

*Resilience Program Manager, Office of Resilience  
Miami-Dade County  
[Christian.Kamrath@miamidade.gov](mailto:Christian.Kamrath@miamidade.gov)*

Christian Kamrath serves as the resilience program manager for the Adaptation Team for Miami-Dade County’s Office of Resilience, where he leads interdisciplinary work on sea level rise and flooding policy, risk assessments and



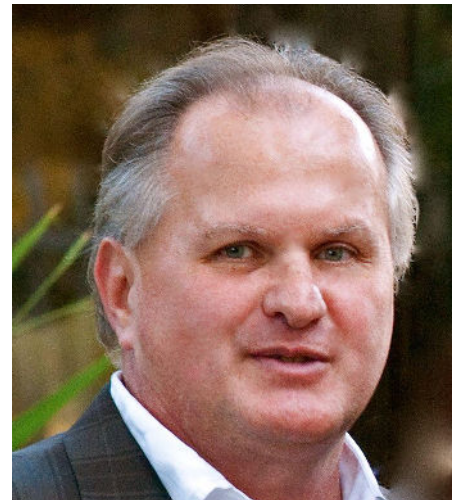
community-based adaptation planning. Through collaboration across county departments, municipal, state, and federal agencies along with community-based organizations, colleges and universities, and other stakeholders, he is responsible for the implementation of the county's first Sea Level Rise Strategy (2021). Prior to working for the county, he supported various coastal zone management, climate adaptation and long-term disaster recovery programs at the local, state, and federal level. Christian is a certified floodplain manager and holds a Bachelor of Science in Geography from the University of Florida and a Master's in City and Regional Planning from the University of North Carolina at Chapel Hill.

### **STEVEN KIRK**

*President*

*Rural Neighborhoods and the Florida Community Land Trust*  
[stevekirk@ruralneighborhoods.org](mailto:stevekirk@ruralneighborhoods.org)

Since 1994, Steven Kirk has served as the president of Rural Neighborhoods and the Florida Community Land Trust. Rural Neighborhoods is a nonprofit housing organization serving 10 Florida counties with a portfolio of 2,100 residential units. Steven is a graduate of Duke University and the recipient of several national housing awards. Under his leadership, Rural Neighborhoods emerged from the aftermath of Hurricane Andrew and has experienced and responded to more than 10 natural disasters in the decades since. His first disaster work was as a member of Miami's We Will Rebuild Foundation, the private-sector initiative that emerged in 1992 post Hurricane Andrew.



### **C.J. REYNOLDS**

*Director of Resilience and Disaster Recovery*  
*The Florida Housing Coalition*  
[reynolds@flhousing.org](mailto:reynolds@flhousing.org)

C.J. Reynolds is the director of Resilience and Disaster Recovery for the Florida Housing Coalition. Most recently, C.J. served as the director of Resiliency and Engagement at the Tampa Bay Regional Planning for nearly four years and led the Regional Resilience Coalition, which includes 32 local governments. C.J. has worked with elected officials, staff, and stakeholders to support coordinated resilience planning, best practices, and programs. She has led the development of the Resilience and Energy Assessment of Communities and Housing (REACH) initiative funded by JPMorgan Chase to help local governments integrate affordable housing and resilience planning. From 2010-2018, C.J. worked with leading faculty at the





University of South Florida to implement research on climate change and stakeholder engagement, which identified impacts to communities and housing, policy disconnects and other barriers to adaptation.

### **LAURIE SCHOEMAN**

*Senior Advisor for Climate Resilience  
White House, Council on Environmental Quality, Executive  
Office of the President*

Laurie Schoeman is currently serving as a White House senior advisor for Climate Resilience in the Executive Office of the President. She was formerly the director of Climate and Sustainable for Enterprise Community Partners Capital Division, where she directed efforts in the Capital division around ESG strategy development, finance, development, and management of climate risks for affordable housing across the nation.



Laurie is a deeply committed multi-sector climate risk reduction leader with 20 years of experience working in affordable housing, climate finance, community and economic development, equity and environmental justice, and federal and local policy, to build the resilience of communities across the nation. Laurie is a nationally known practitioner and intermediary recognized for her keen ability to drive complex problems into tangible outputs to accelerate climate-safe and adaptive communities. Laurie has led leading-edge local, state and federal efforts to promote climate risk reduction, including the passage of the nation's first utility-sponsored environmental justice policy in San Francisco; the construction of the nation's first off-grid environmental justice learning center in California; and the publication of a series on Climate Resilient Housing which has led to close to \$250M of investment into housing resilience. Laurie is the co-chair of the New York State Climate assessment buildings chapter and co-facilitates Resilience21, a network of practitioners across the U.S. advancing climate risk reduction and adaptation. Laurie has a Master's of Urban Planning from Hunter College and a Bachelor's from Smith College.

### **MATTHEW WYMAN**

*Community Land Trust Institute Manager  
Florida Housing Coalition  
[wyman@flhousing.org](mailto:wyman@flhousing.org)*

Matthew Wyman is the Community Land Trust Institute manager for the Florida Housing Coalition. As an award-winning efficiency expert and permanent



affordability advocate, Matthew's focuses on establishing and building the capacity of community land trusts while equipping them to operate at the highest standards, including the long-term stewardship responsibility that makes the community land trust an attractive housing model for renters, homebuyers, developers, local governments, and lenders.

Matthew previously served the citizens of Leon County, Florida, as Housing Services manager and SHIP administrator. During his tenure, he transitioned the Division of Housing Services out of a paper-based grant management process, leveraging software to better serve customers and stay audit-ready. As a result of this planning and preparation, Matthew and Leon County staff were awarded by organizations, including the Florida Housing Coalition, for excellence in the rapid expenditure of Coronavirus Relief Funds (2020). Matthew holds a Master's degree in Business Administration and is a U.S. Marine Corps Combat Veteran.