

# Cross-Departmental Strategic Priority Teams Drive Metrics



**Dr. Keith A. Clinkscale**, Lean Six Sigma Black Belt  
*Director, Strategic Planning and Performance Management Division*

Office of Financial Management & Budget Department , Strategic Planning & Performance Management Division

301 N. Olive Ave., 7<sup>th</sup> Floor, West Palm Beach, FL 33401

[KCLINKSCALE@pbcgov.org](mailto:KCLINKSCALE@pbcgov.org)

# Board Approved Strategic Priorities 2019/2020

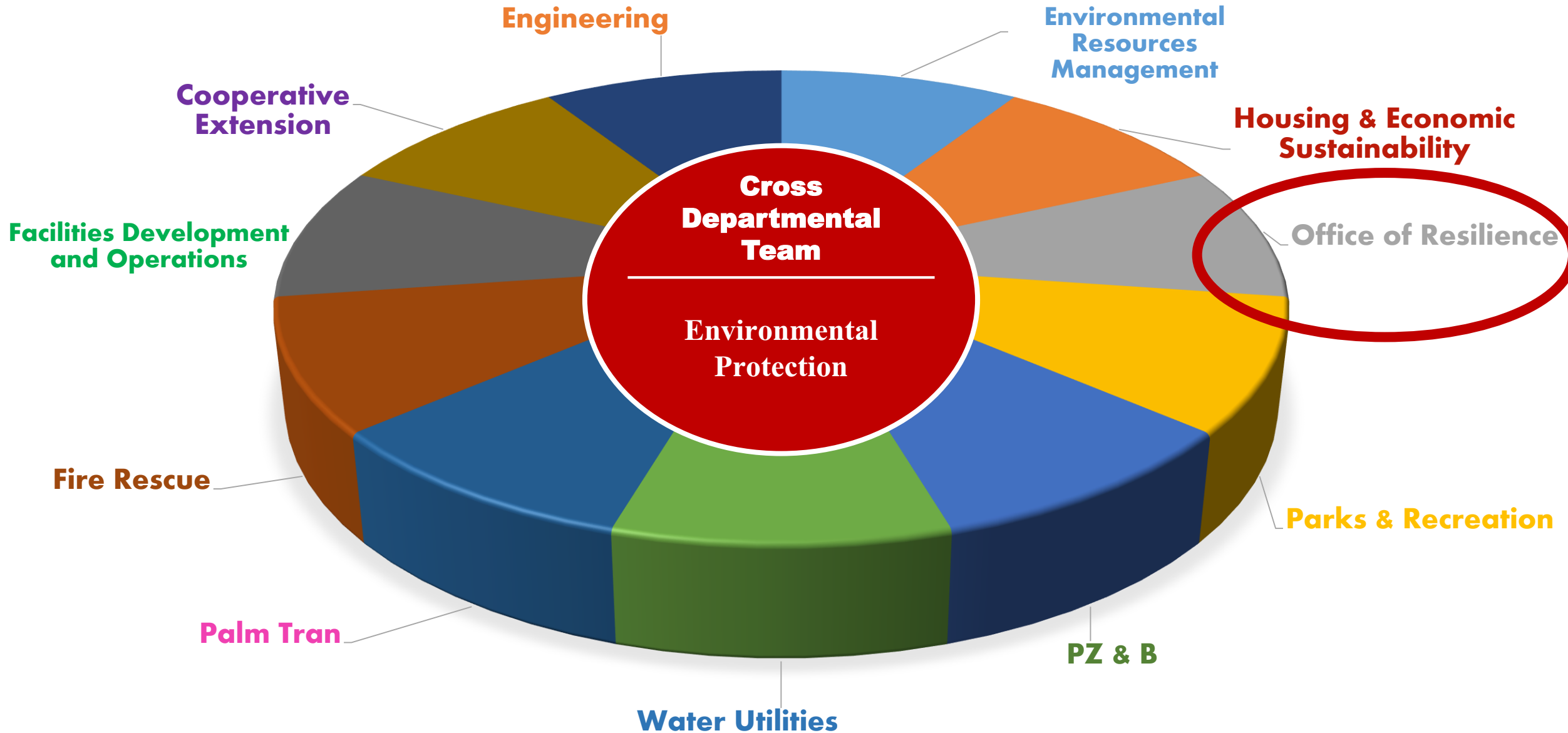
- **Economic Development**
- **Housing/Homelessness**
- **Environmental Protection**
- **Infrastructure**
- **Public Safety**
- **Substance use and Behavior Disorder**

A landscape of mountains at sunset. The sky is a gradient of orange and red, transitioning into a blue sky. The mountains are silhouetted against the sky, with the foreground mountains in a darker blue and the background mountains in a lighter blue. The quote is centered over the image.

You can't manage what  
you don't measure.

Peter F. Drucker

# ***Strategic Priority: Environmental Protection***



# STRATEGIC PRIORITY: ENVIRONMENTAL PROTECTION

*“To promote programs and activities that protect, preserve, and enhance natural resources while providing sustainable living and developing a climate of resilience.”*

## Environmental Protection Goals:

- Provide support for our Farmers and Agriculture
- Enhance and restore conservation lands and coastal habitats
- Reduce mosquito populations
- Protect drinking water quality
- Ensure environmental protection in site plan approvals
- Protect beaches
- Increase sustainability awareness
- Continue to provide/develop energy efficient facilities
- Encourage public transportation use and ride sharing
- Increase alternative fuel and clean energy sources
- **Create more resilient communities**
- Mitigate climate change impacts
- Promote clean energy job creation
- Design and construct 4 artificial reefs
- Storm water management and compliance
- Address algae and water quality of local bodies of water

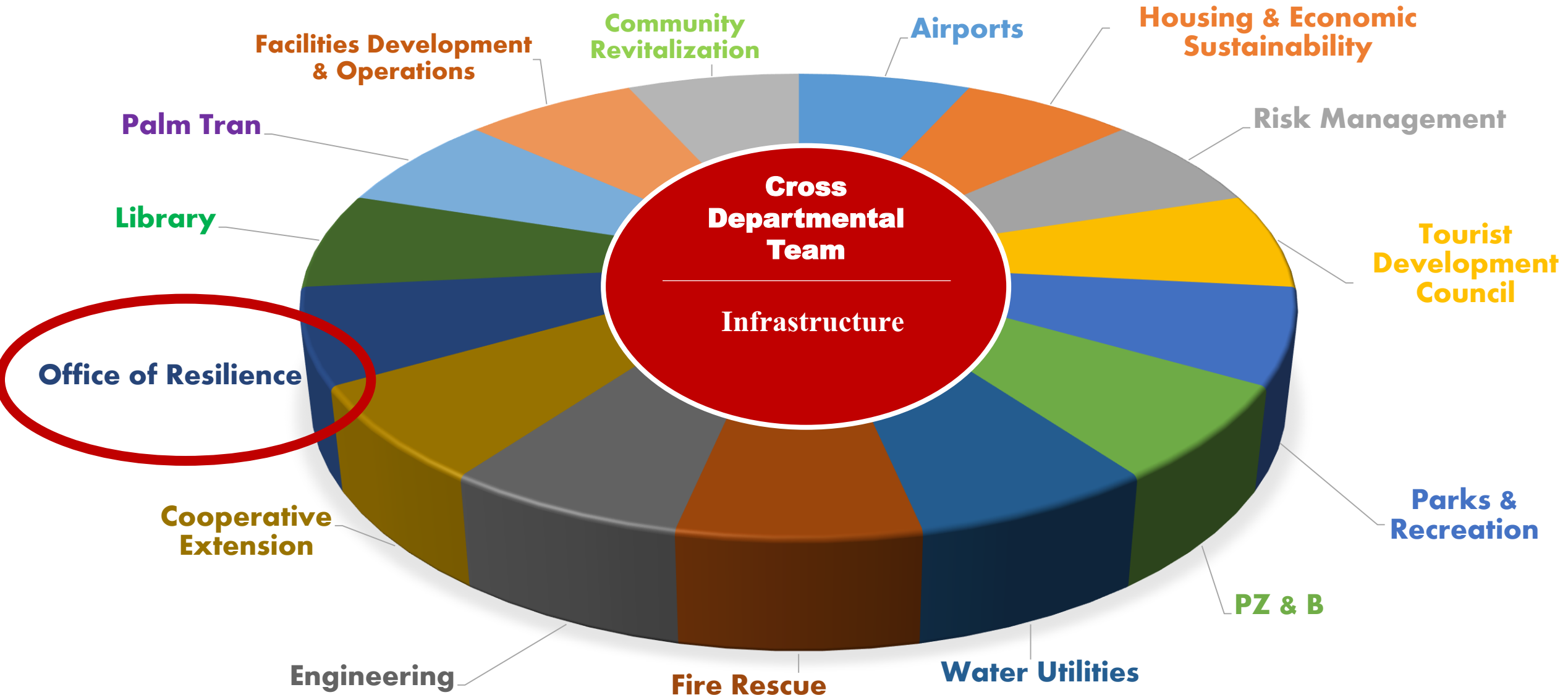


# STRATEGIC PRIORITY: ENVIRONMENTAL PROTECTION

## METRICS

- Maintain the County's inventory of 31,628 acres of natural area lands for invasive/ exotic vegetation at less than 1% coverage
- Maintain 166 miles of publically accessible trails in County natural areas
- Increase acreage of estuarine and freshwater habitats
- Maintain an 11-year moving average of greater than 1 million cubic yards of sand placed on beaches County-wide
- Inspect coastal facilities to achieve at least 90% compliance with sea turtle lighting ordinance
- Achieve at least 90% completion of mosquito control service requests within 5 days
- Achieve at least 95% compliance with storage tank regulations
- Annual community/government renewable energy usage
- Decrease per capita vehicle miles traveled
- **Increase percent compliance with Resiliency and Sustainability in County Capital Projects**
- Reduce per capita water demand
- Percent increase in restored habitat
- Increase number of activities and programs that support Farming and Agriculture

# ***Strategic Priority: Infrastructure***





# STRATEGIC PRIORITY: INFRASTRUCTURE

*“To provide the needed structures, systems and services that establish the foundation required to enhance the quality of life of every resident.”*

## Infrastructure Goals:

- Increase sustainability of infrastructure
- **Plan and design for sea level rise and extreme weather events**
- Continue to develop infrastructure services
- Safe, healthy and attractive neighborhoods and communities
- Access to opportunities safely, efficiently and courteously through stellar transportation services
- Increase connectivity and safety through complete streets (i.e. bicycle lanes, proper signage, pedestrian lanes and cross-walks)





# STRATEGIC PRIORITY: INFRASTRUCTURE

## METRICS

- Average annual traffic delay (during peak hours) due to traffic congestion
- Reduce peak period travel time on certain major corridors
- Increase travel time reliability on certain corridors
- Increase bus on-time performance
- Decrease traffic crashes, bicycle collisions and pedestrian incidents
- Maintain 100 percent compliance with drinking water standards
- **Increase number of resilient public facilities available**
- **Increase resiliency of public shelters (including self-sufficiency)**
- **Use of unified sea level rise projections on applicable projects**
- Increase Library attendance/usage