



# ***Home Ports: Success Stories from SE FL*** **Adaptation Action Areas**



**CITY OF FORT LAUDERDALE**

# What are Adaptation Action Areas?

Florida State Community Planning Act 2011

***Florida Growth Management Act***

***Sec. 163.3164(1) and Sec. 163.3177(6)(g)(10)***

***An optional comprehensive plan designation for areas that experience coastal flooding and that are vulnerable to the related impacts of rising sea levels for prioritizing funding for infrastructure and adaptation planning.***







## A Region Responds to a Changing Climate

Southeast Florida Regional Climate Change Compact Counties

Regional Climate Action Plan

October 2012



# AAAs in the RCAP

## Sustainable Communities Recommendations Category

- Goal 1 : Reduce financial and physical losses in our building stock reshaping where and how we build
- Recommendations  
SP:1-9,11,14  
Address AAAs or Comprehensive Planning



CITY OF FORT LAUDERDALE

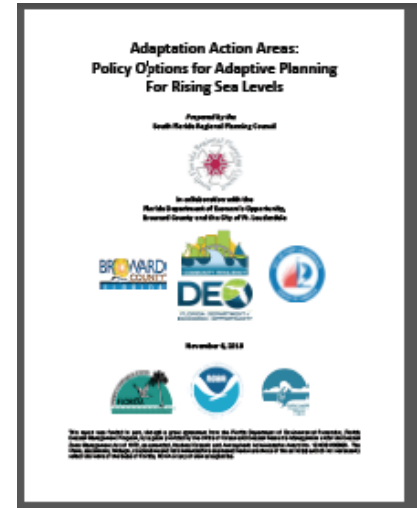


# Adaptation Action Areas (AAAs)

- Multi-Agency Pilot Project



CITY OF FORT LAUDERDALE



- Public Input



- Public Policy

**WE ARE READY**  
*We are a resilient and safe coastal community.*



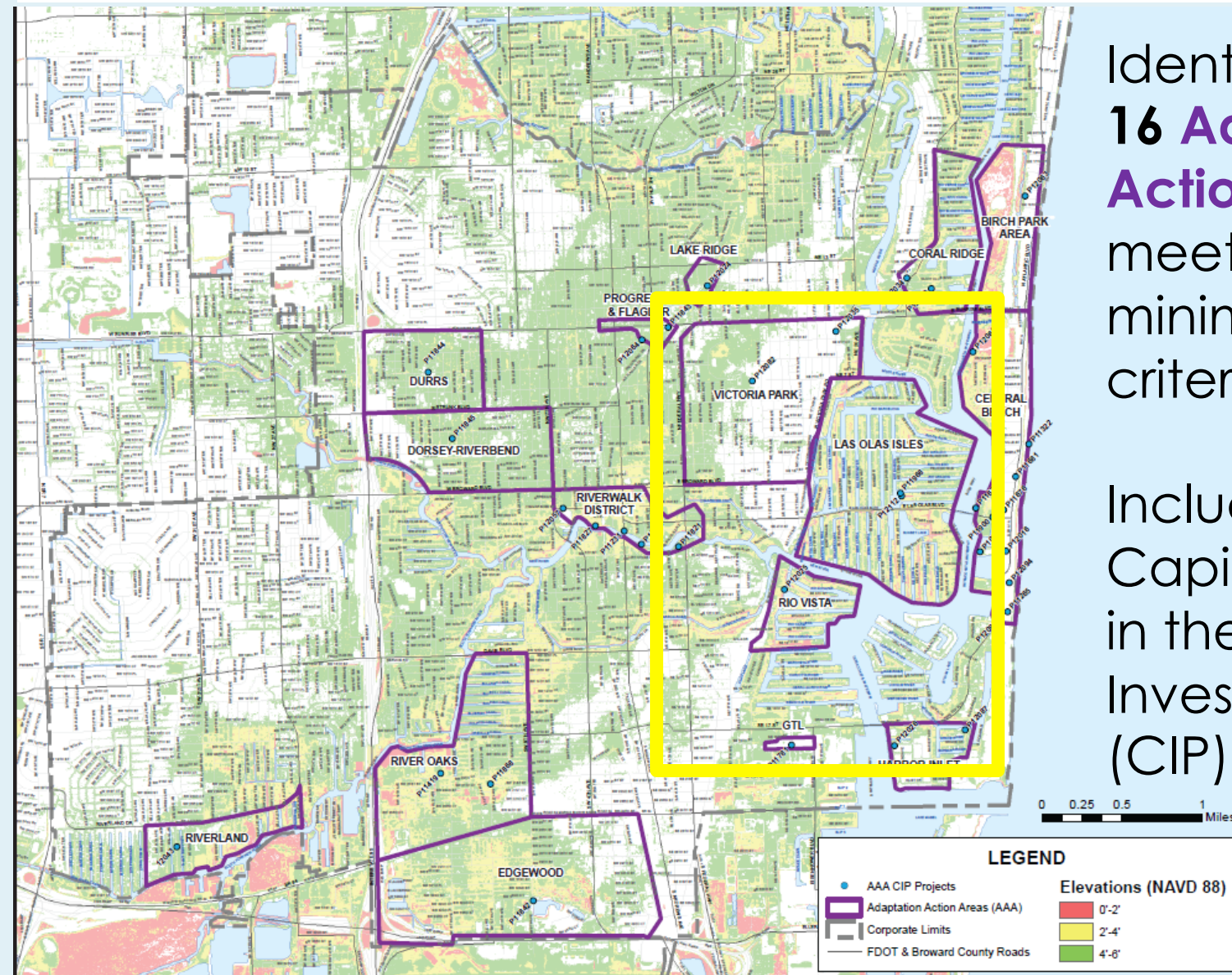


# Designated Adaptation Action Areas and Projects

## FY 2016-2020

Identification of  
**16 Adaptation  
Action Areas**  
meeting  
minimum AAA  
criteria

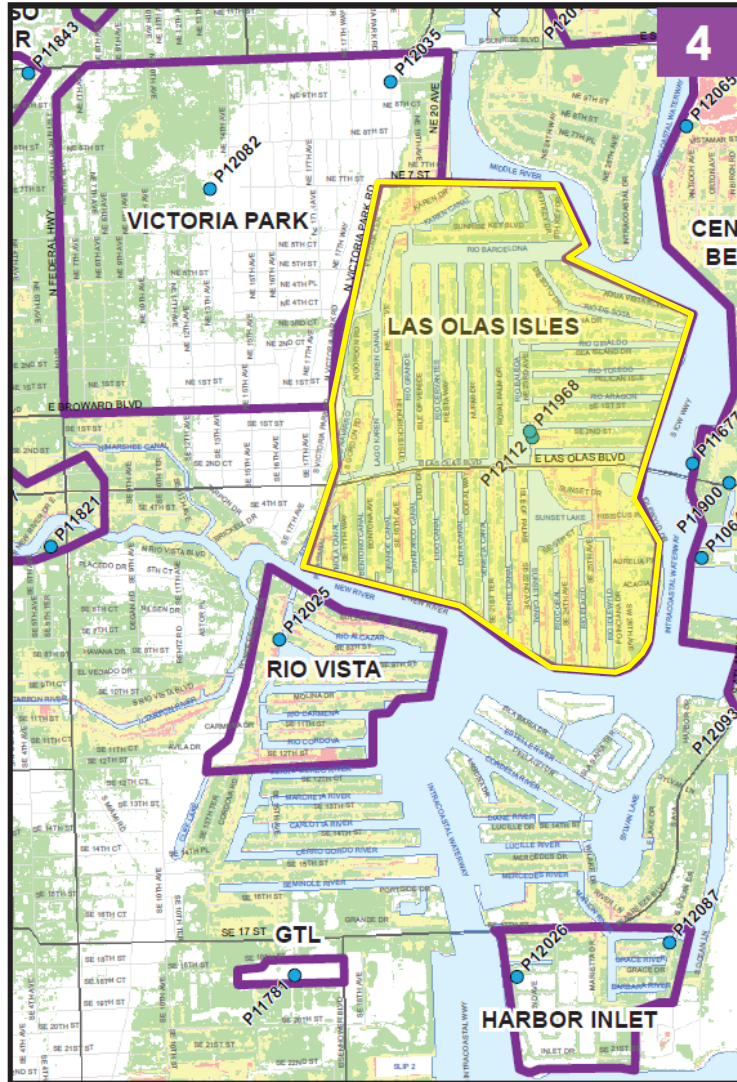
Includes **38**  
Capital Projects  
in the Community  
Investment Plan  
(CIP) for funding





# Designated Adaptation Action Areas and Projects

## FY 2016-2020



### GTL - GEORGE T. LOHMEYER WASTEWATER TREATMENT PLANT (see map 4)

**P11781** Cryogenic Plant

### HARBOR INLET (see map 4)

**P12026** 2100 SE 18Th Street Stormwater Improvements

**P12087** Bridge Replacement At South Ocean Drive

### LAS OLAS ISLES (see map 4)

**P12112** Del Mar Stormwater Improvements

**P11968** Seven Isles Seawall Improvements

### RIO VISTA (see map 4)

**P12025** 1436 Ponce De Leon Drive  
Stormwater Improvements

### VICTORIA PARK (see map 4)

**P12082** Victoria Park Tidal And Stormwater Improvements

**P12035** 1000 NE 17Th Way Stormwater Improvements

### LEGEND

● AAA CIP Projects

□ Adaptation Action Areas (AAA)

□ Corporate Limits

— FDOT & Broward County Roads

### Elevations (NAVD 88)

0'-2'

2'-4'

4'-6'



# NEXT STEPS

1. Proceed with existing CIP projects
2. Annual review of new projects and location for AAA designations during budget process
3. Determine locations where improvements warrant removal of AAA designation



# ADAPTATION ACTION AREAS

» WE ARE READY

*We are a resilient and safe coastal community.*

Questions?

Nancy J. Gassman, Ph.D.  
[ngassman@fortlauderdale.gov](mailto:ngassman@fortlauderdale.gov)