

Cycle 2 National ZEV Investment Plan

Miami Overview

09.19.2019



Electrify America's Cycle 2 plan supports our mission to develop an ultra-fast, comprehensive fueling network for all

Cycle 2 Principles

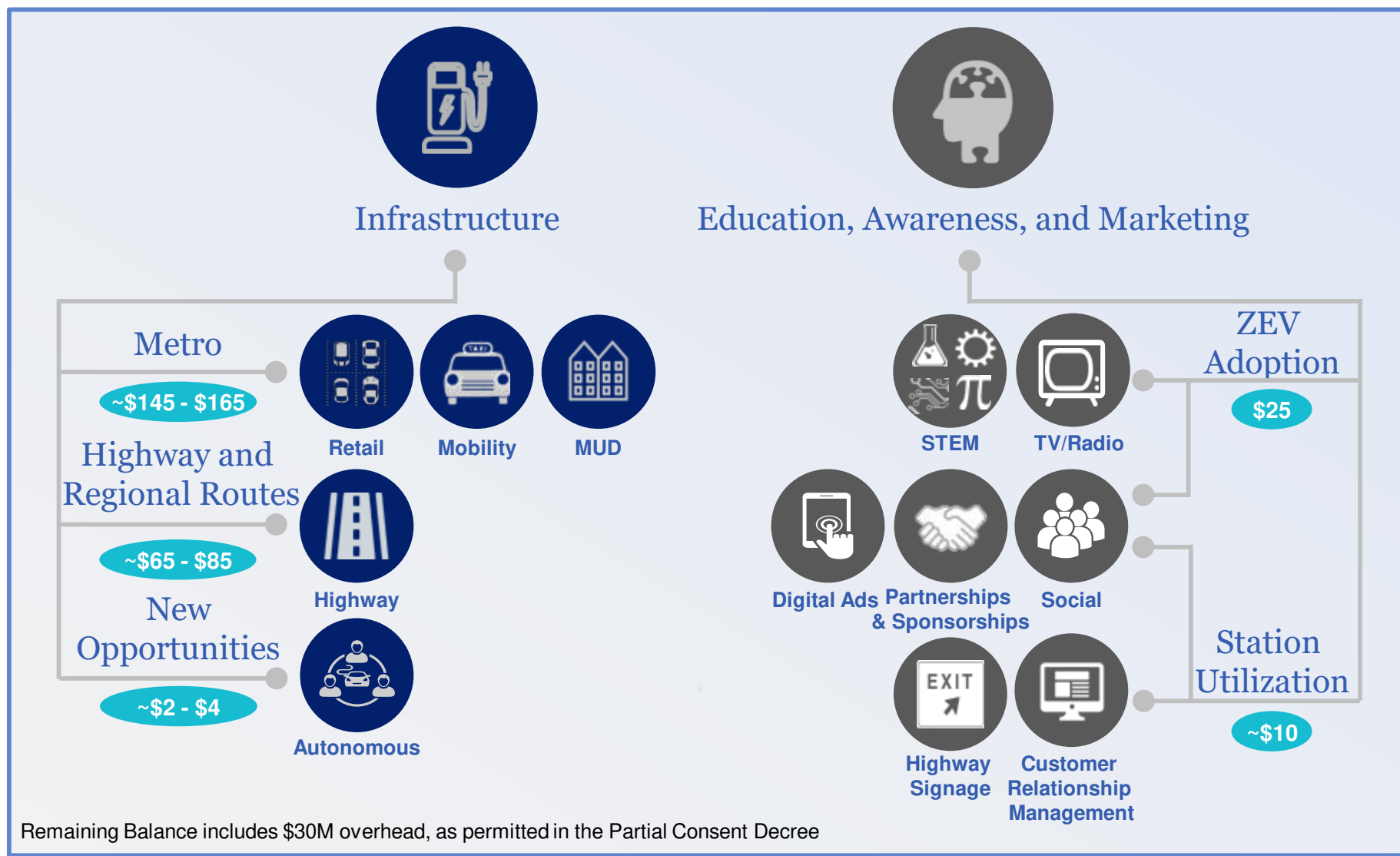
Start from the fundamentals

Engage external stakeholders

Emphasize real world inputs



The Cycle 2 Plan invests \$300M nationally between July 1, 2019, and December 31, 2021 to increase ZEV adoption

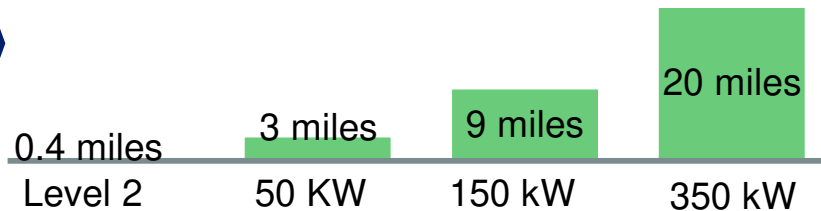


Electrify America stations will continue to feature ultra-fast charging speeds with customer-focused features and design

Speed

Miles of range* per minute charged by DCFC

*Assumes 3.5 miles per kW power



Connections

Non-proprietary chargers at all stations:
CCS and CHAdeMO

Payment

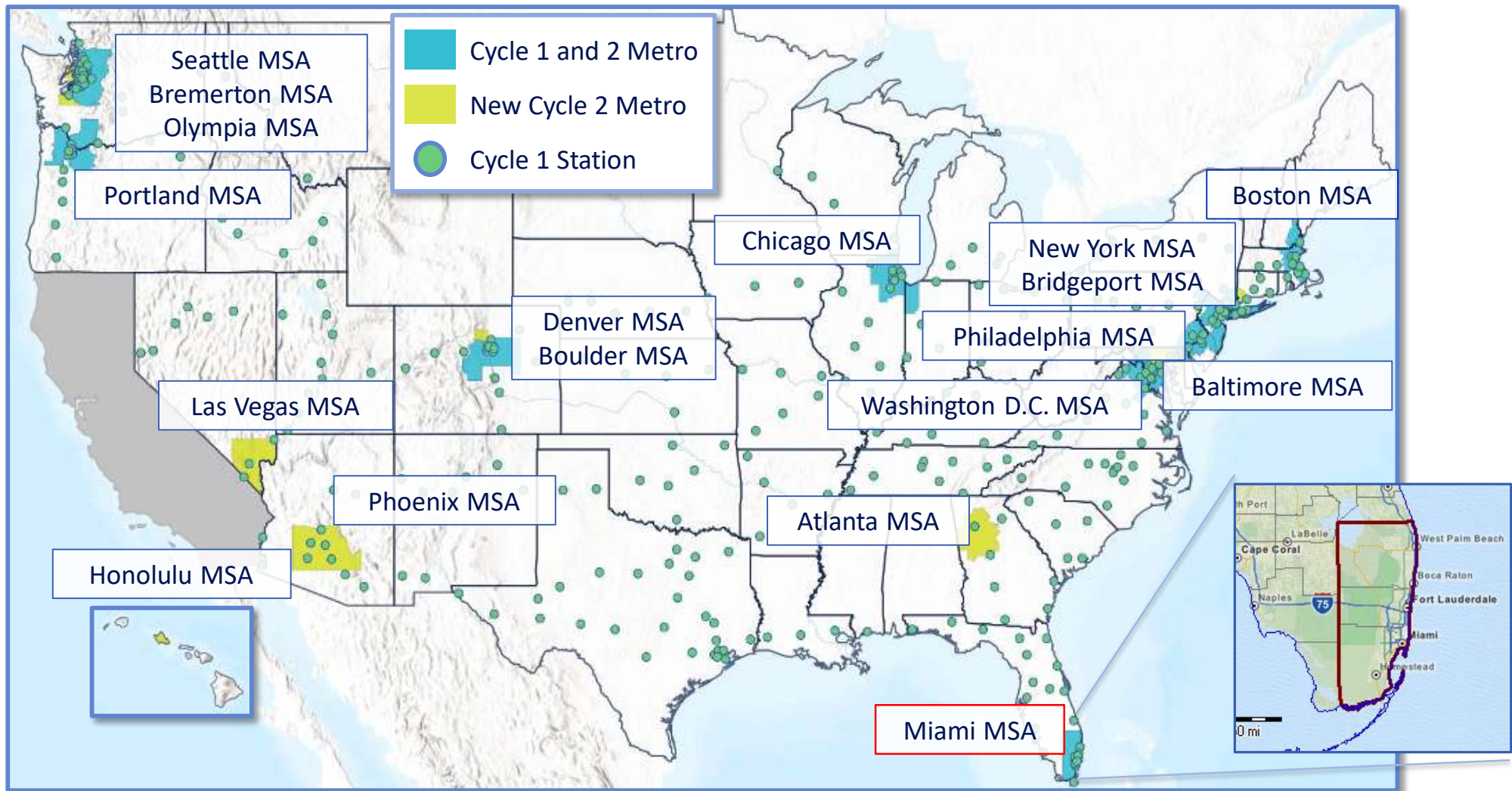
Credit card access

RFID, Mobile Pay & app access

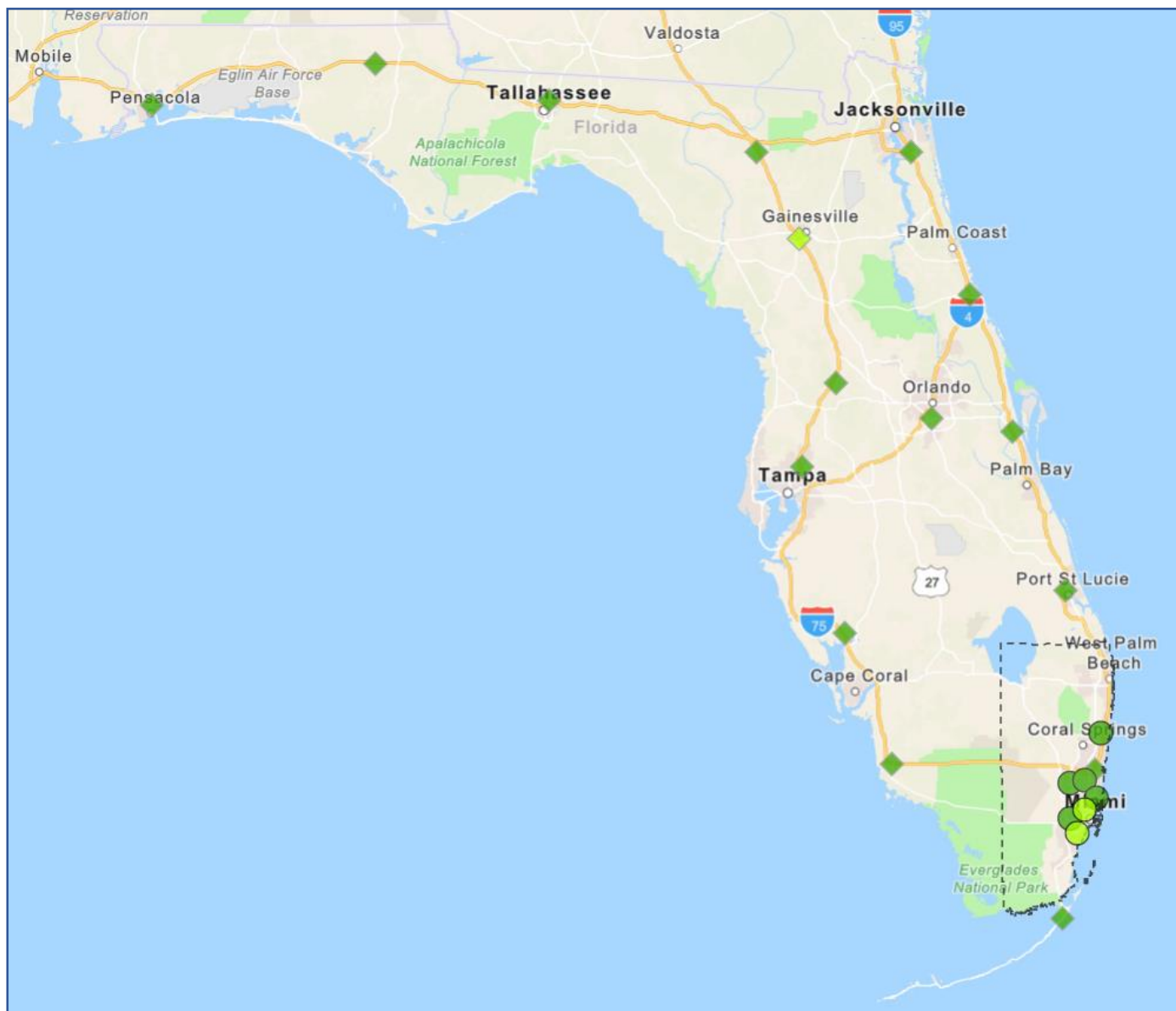
Plug and Charge (CCS ISO15118)



Cycle 2 investments will be made in 18 metropolitan areas across the country, an increase of 7 from Cycle 1



Electrify America - Cycle 1 DCFC Investments in Florida



- ◆ Highway station commissioned
- ◆ Highway station under construction

- Metro station commissioned
- Metro station under construction

The Miami metro area is targeted for an additional 6-10 locations in Cycle 2

Electrify America partners with 25 real estate companies to secure station sites that meet several criteria



Sheetz, Fueling, Dining, and Convenience Chain, Girard, OH



Walmart, major national grocery and retail chain



Dell Mercantile, General store & Post Office, Dell, Montana



Target, major national grocery and retail chain



Brugh's Mill Country Store, Fincastle, VA



Macerich, Real Estate Investment Trust Specialized in Malls



Safety



Visibility



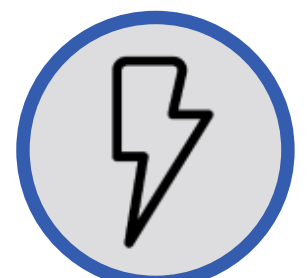
Sufficient Parking



Retail Proximity

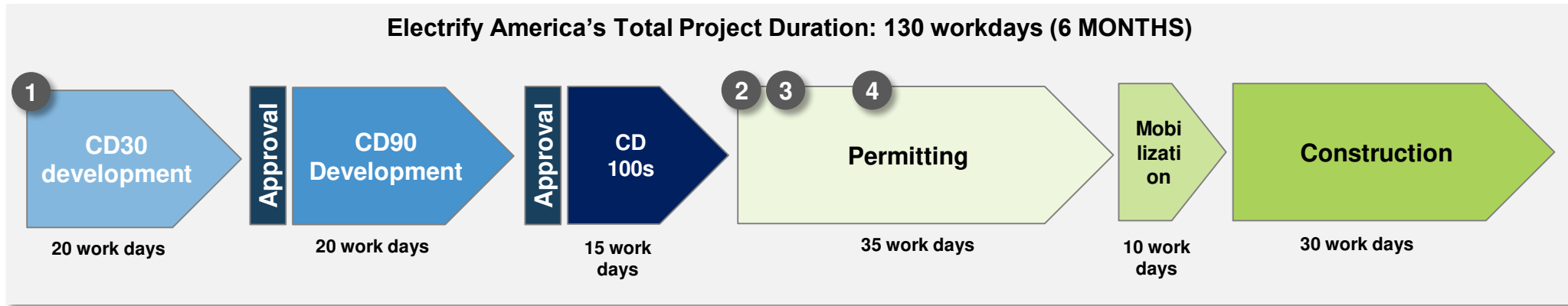


24/7 Access

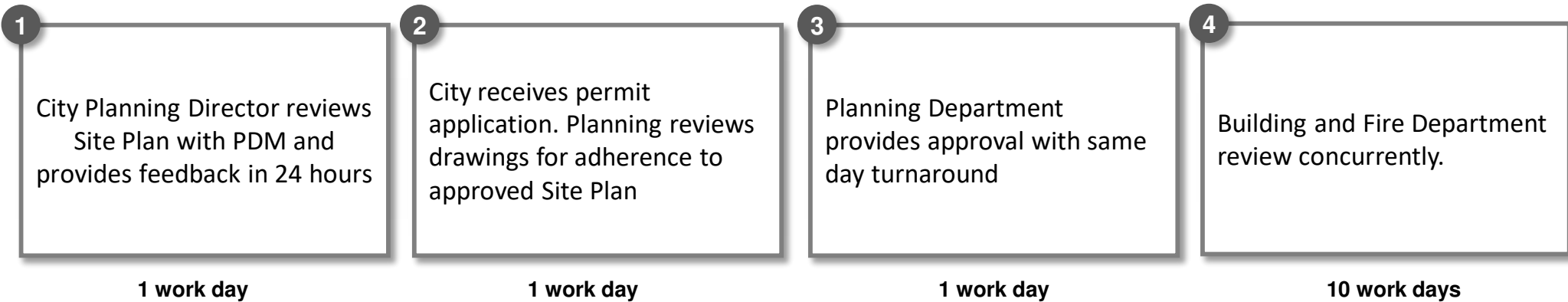


Power Proximity

Clear and consistent permitting practices and requirements can reduce costly delays



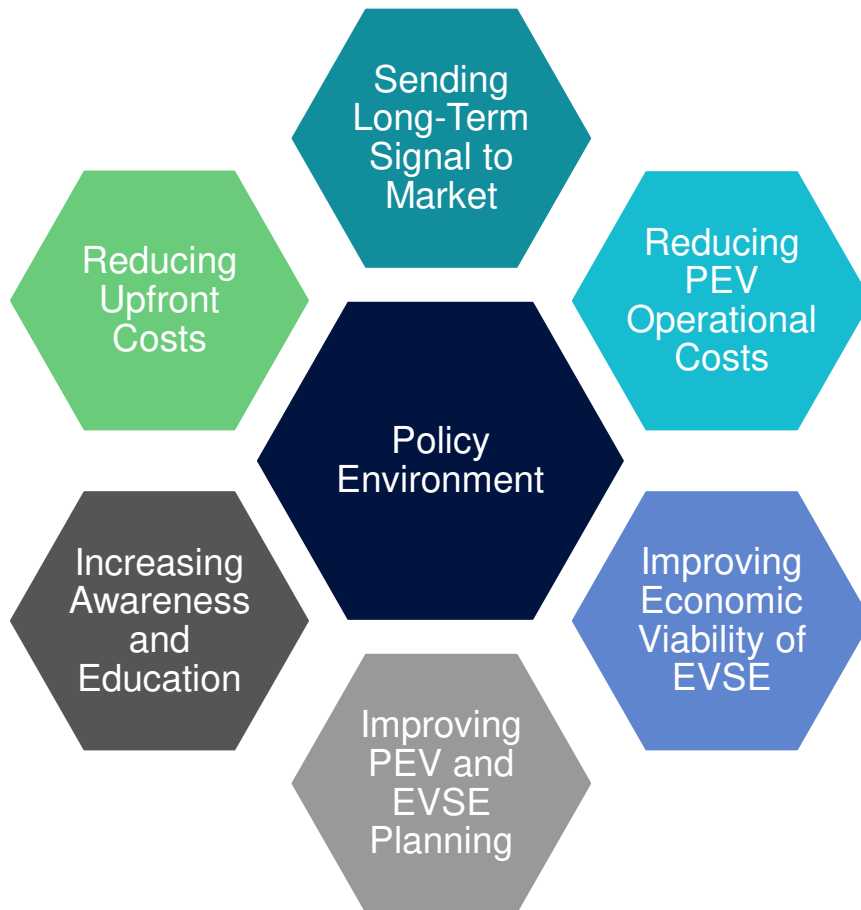
Permitting Best Practice Example:



TOTAL PERMITTING TIME: MAX 3 WEEKS



States and cities can create policy environments to encourage ZEV adoption and investment



Analysis by NASEO and Cadmus found sending a long-term signal to the market and reducing upfront costs were the most powerful policy tools to drive ZEV adoption.

PEV Policy Evaluation Rubric:
https://naseo.org/Data/Sites/1/pevpolicyrubricmethodology_naseo.pdf

We look forward to continued collaboration



Thank you

Andrew Dick
State Government Affairs Manager
andrew.dick@electrifyamerica.com