

Bill Johnson, RN, Director  
Division of Emergency Management

# **POST-DISASTER REDEVELOPMENT PLAN**



# What is a PDRP?

- ◉ Identifies post-disaster policies, operating strategies, and roles
- ◉ Guides decisions and coordinates post-disaster redevelopment and resiliency topics:
  - Business resumption
  - Economic recovery
  - Community improvement
  - Housing repair and reconstruction





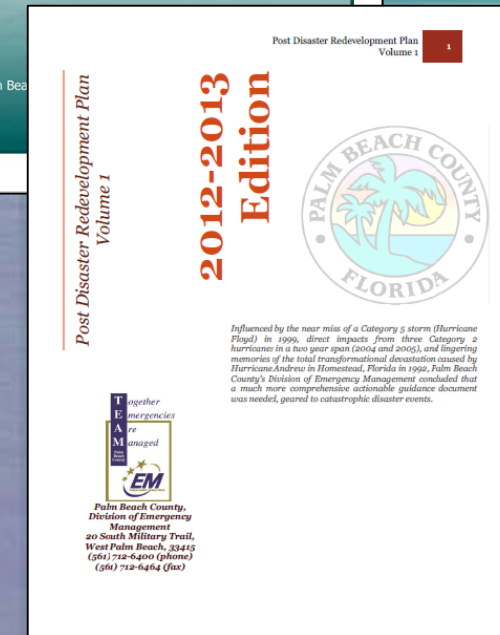
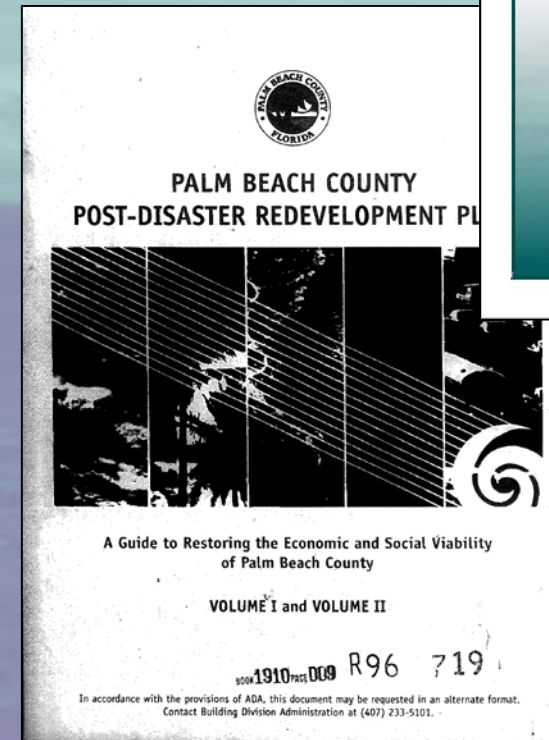
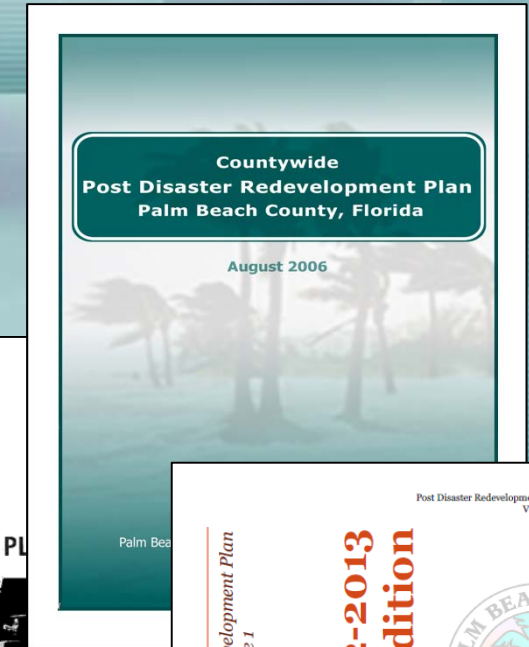
# What is a PDRP?

- PDRP topics:
  - Infrastructure restoration and mitigation
  - Sustainable land use
  - Environmental preservation
- Exploit opportunities to build back better and smarter through hazard mitigation
- Foundation for holistic recovery
- Strategic tool for building a more disaster resilient community and economy



# Palm Beach County's PDRP

- First created in 1996
  - Rudimentary
    - Land use
    - Development
- 2006 revision
  - More comprehensive
- 2012 revision
  - Compliant with 2010 FL PDRP guidelines
  - National Disaster Recovery Framework
  - Added sea level rise





# Palm Beach County's PDRP

- 3 volumes
  1. Overall activation and implementation
  2. Detailed technical information
  3. Administrative support
- Designed for 3 most probable disaster risks:
  1. Intense hurricanes
  2. Breach of the Herbert Hoover Dike
  3. Large scale flooding events



# Time-phased relationships

- Not a stand alone plan
- Compliments and supports
  - CEMP
  - LMS
  - Recovery Plan

## PDRP & Disaster Management Cycle

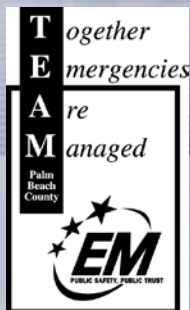


# Timeline





# Response



**Executive Policy Group**  
County Administrator – Incident Commander  
Mayor, Board of County Commissioners  
Public Safety Dept. Director  
Palm Beach County Attorney

**Unified Command**  
Emergency Management Director  
Palm Beach County Sheriff  
Fire Chief, Palm Beach County Fire-Rescue  
Palm Beach Co. Health Department Director

**Board of County Commissioners**  
PBC Constitutional Officers  
15th Judicial Circuit  
PBC School Board  
League of Cities  
Legislative Affairs  
PBC Convention Bureau  
Medical Examiner  
Military Support/FLNG


**Liaison Officer**  
PBC Administration

**Public Information Unit (ESF #14)**  
Public Affairs

**Emergency Information Unit (EIC)**  
Victim & Justice Services

**Safety Officer**  
Risk Management

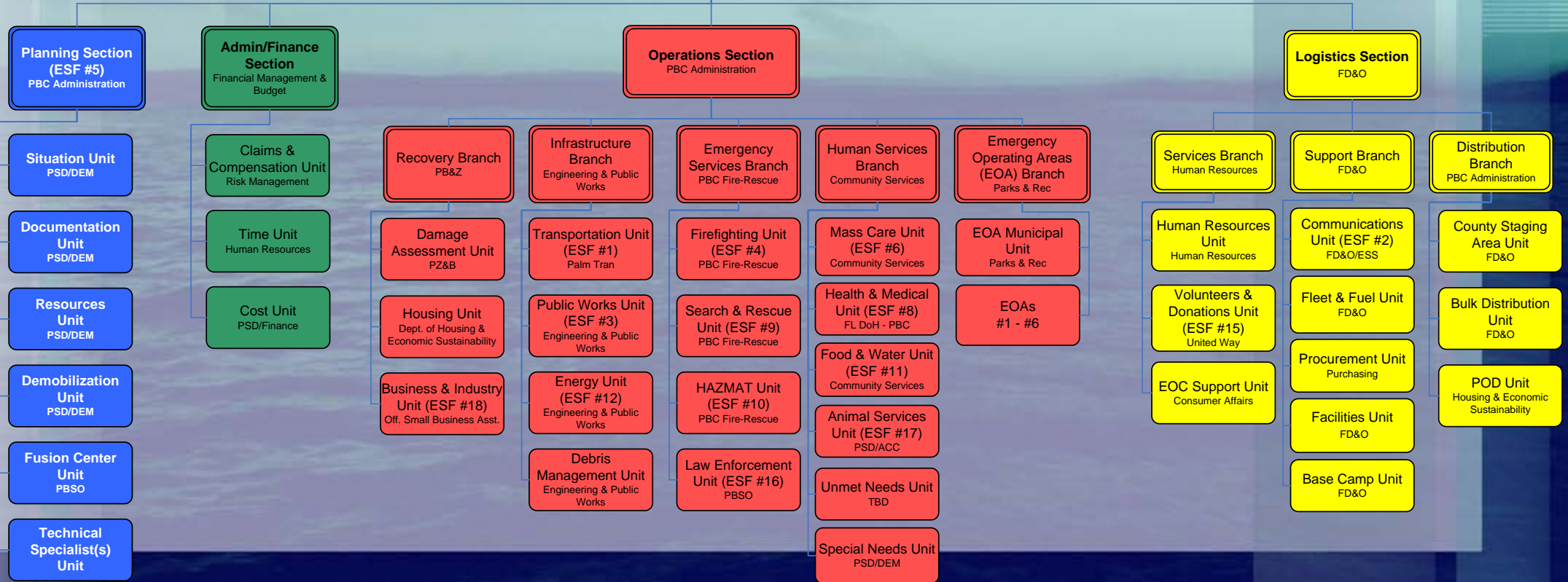
**Information/Technology Support**  
ISS



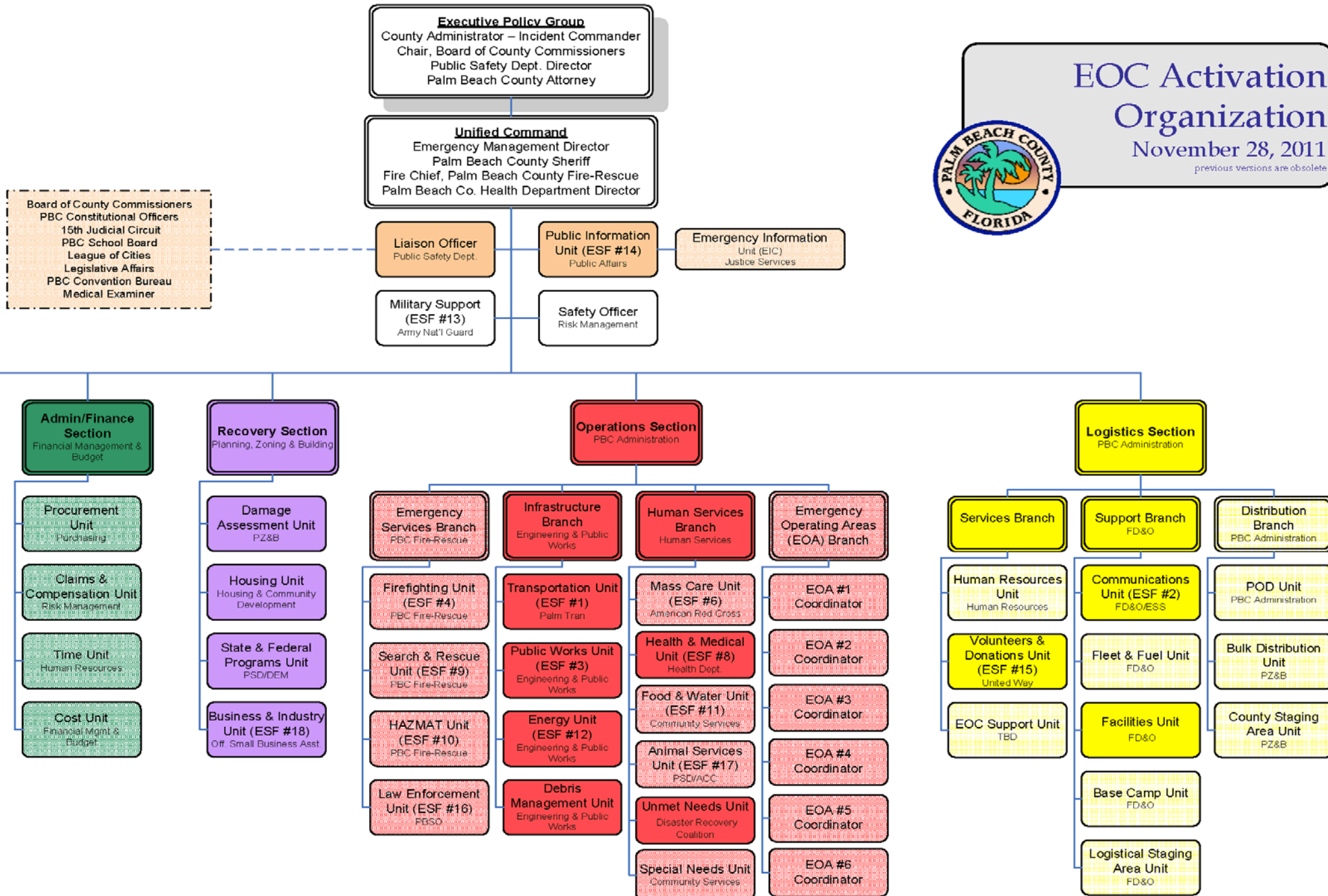
## Palm Beach County EOC Activation Organization

February 2018

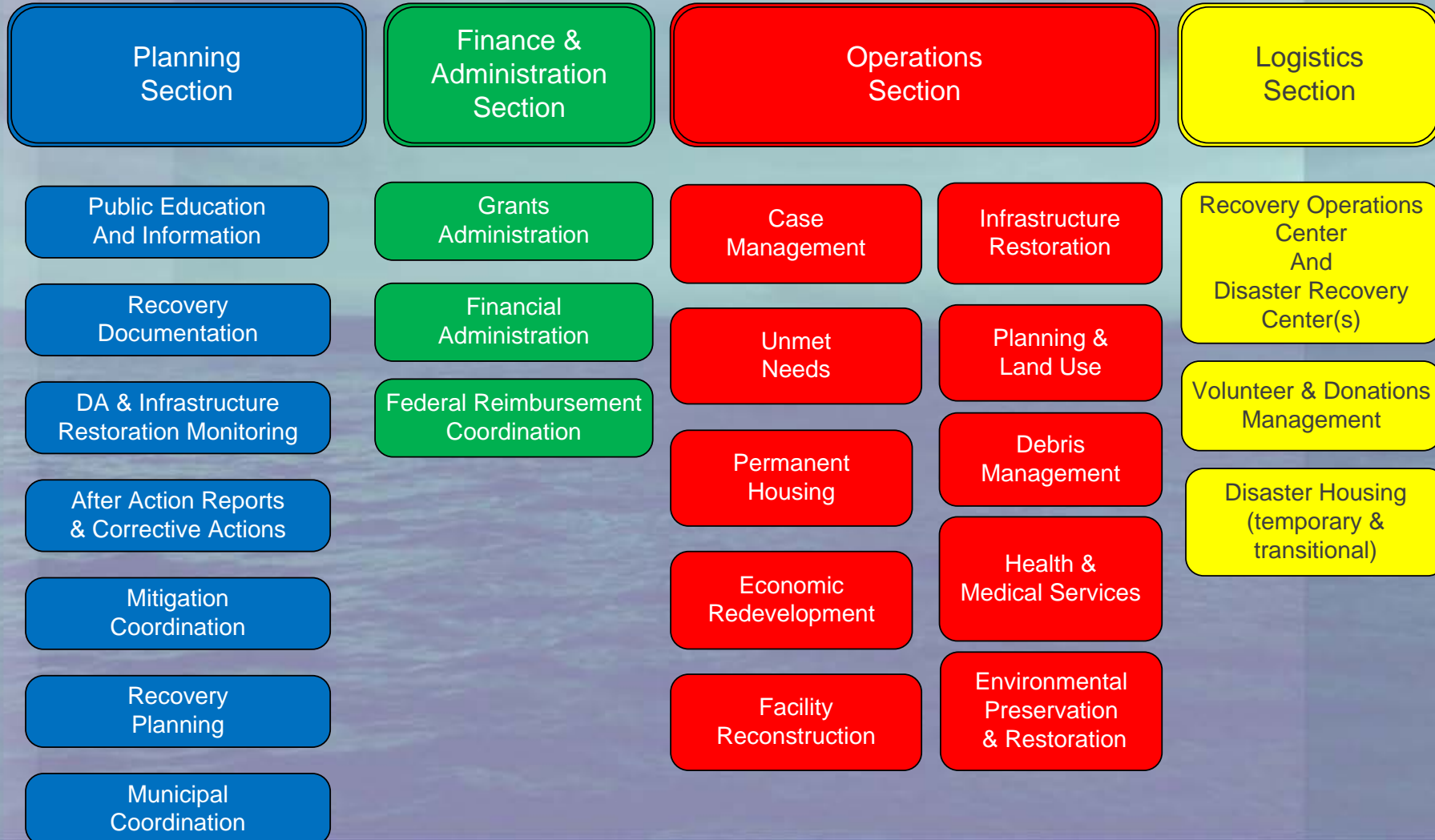
previous versions are obsolete







## Recovery Steering Committee





## PDRP Executive Committee

### County Department Representatives

Deputy County Administrator (Chair)  
Director, Planning Division  
Executive Director, Planning, Zoning, & Building  
Deputy Director, Facilities Development & Operations  
Administrator, Fire and Rescue  
Director, Building Division  
Director, Housing & Community Development  
Director, Department of Economic Sustainability  
Director, Housing & Finance Authority  
Director, Purchasing  
Director, Division of Emergency Management  
Director, Division of Human Services  
Director, Environmental Resource Management  
Director, Engineering & Public Utilities

### Countywide Organization Representatives

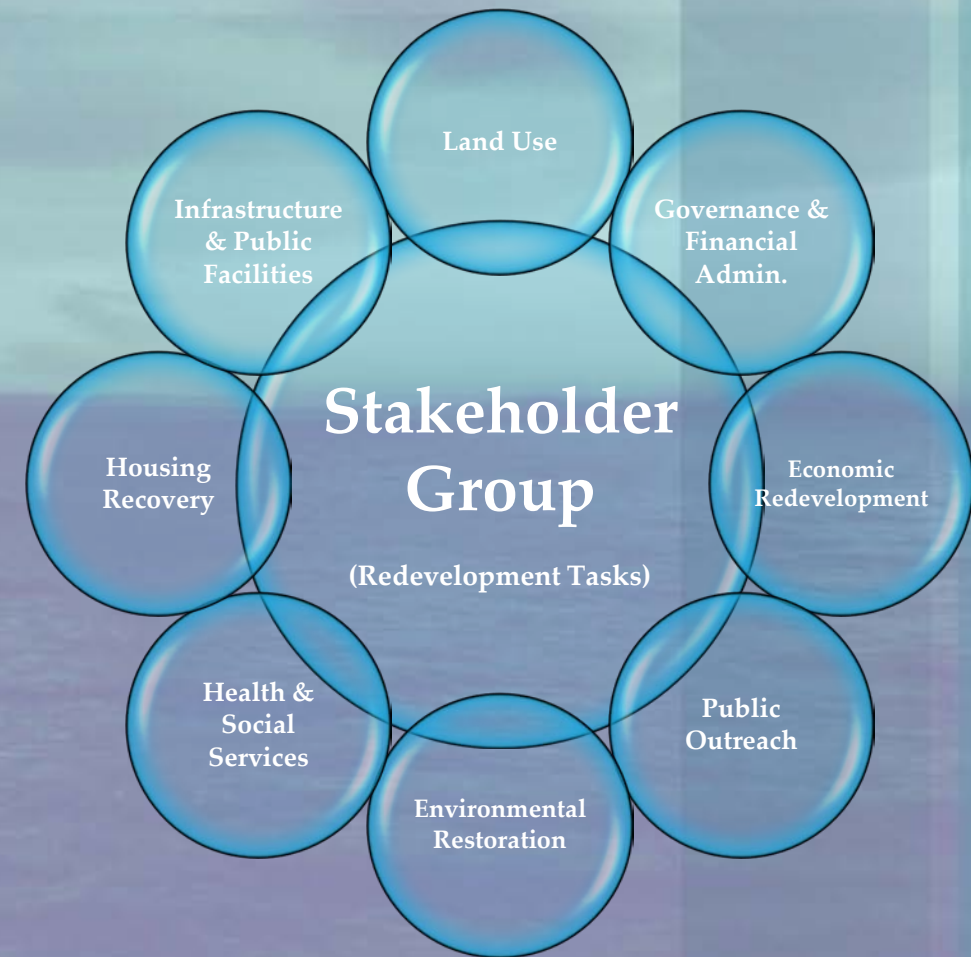
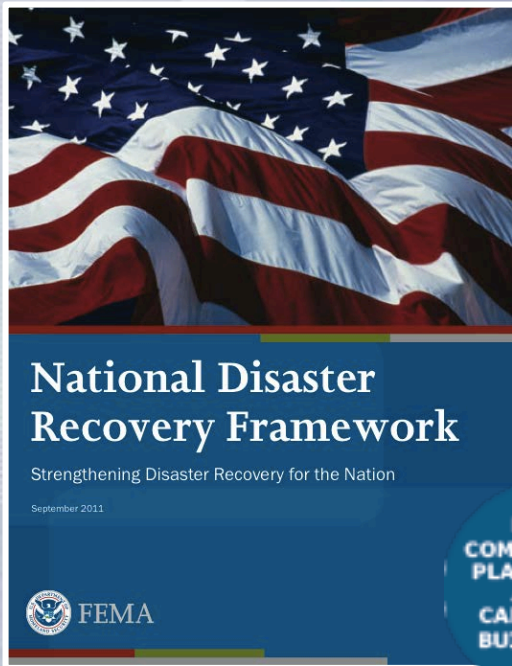
Director Planning & Environmental Programs SWA  
Director, Tourist Development Council  
Hospital Administrators  
Chief of Facilities, Palm Beach County School Board  
Chair, Palm Beach County Private-Public Partnership  
President, Business Development Board  
Executive Director, Palm Beach County League of Cities  
Director, Palm Beach Metropolitan Planning Organization Director  
Disaster Recovery Coalition

### Municipal Representatives

Minimum of four municipal representatives



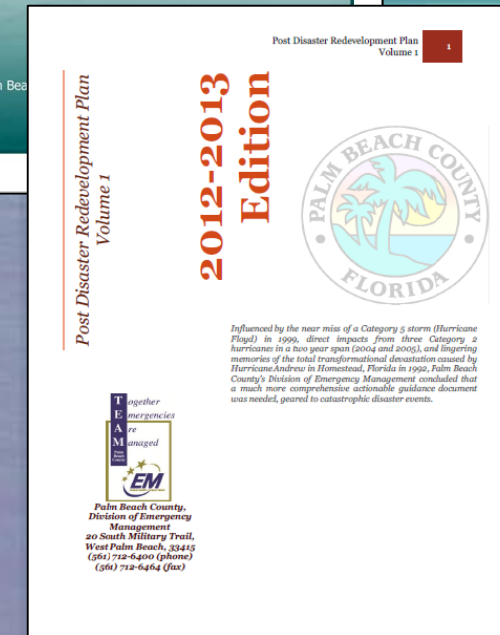
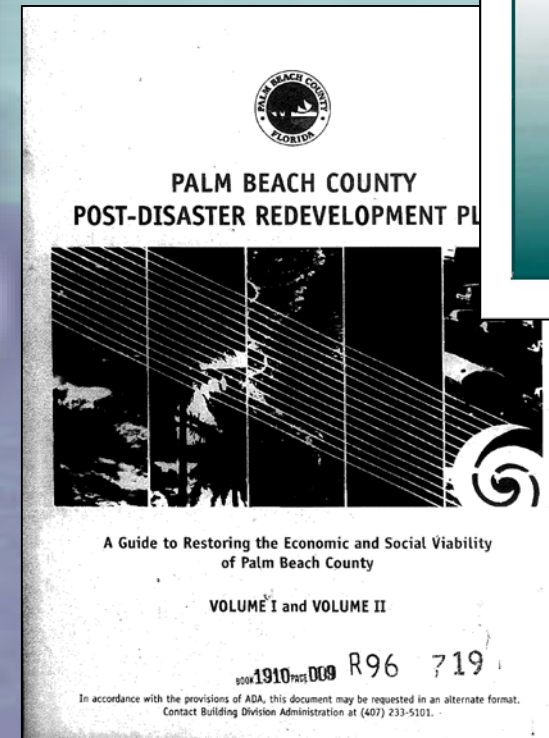
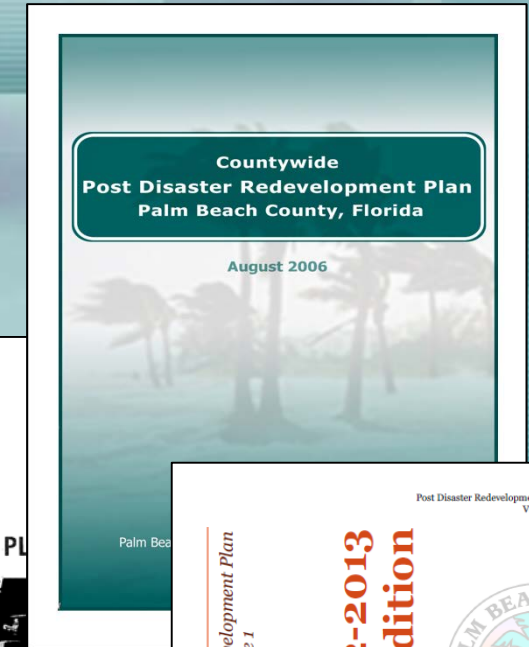
# PDRP Technical Advisory Comm.





# Palm Beach County's PDRP

- The PDRP has not been activated since its development
- Recent events have not met the scope and magnitude criteria for activation



# Sea Level Rise

- SLR is a progressive hazard that can result in critical consequences
- Planning grant from Florida Department of Economic Opportunity
- Teamed with the Southeast Florida Regional Climate Change Compact



**SOUTHEAST FLORIDA**  
**REGIONAL COMPACT**  
**CLIMATE CHANGE**





# Sea Level Rise

- ◉ PDRP acknowledges that Sea Level Rise poses:
  - High probability of continued Sea Level Rise
  - High impact potential
  - Significant consequences

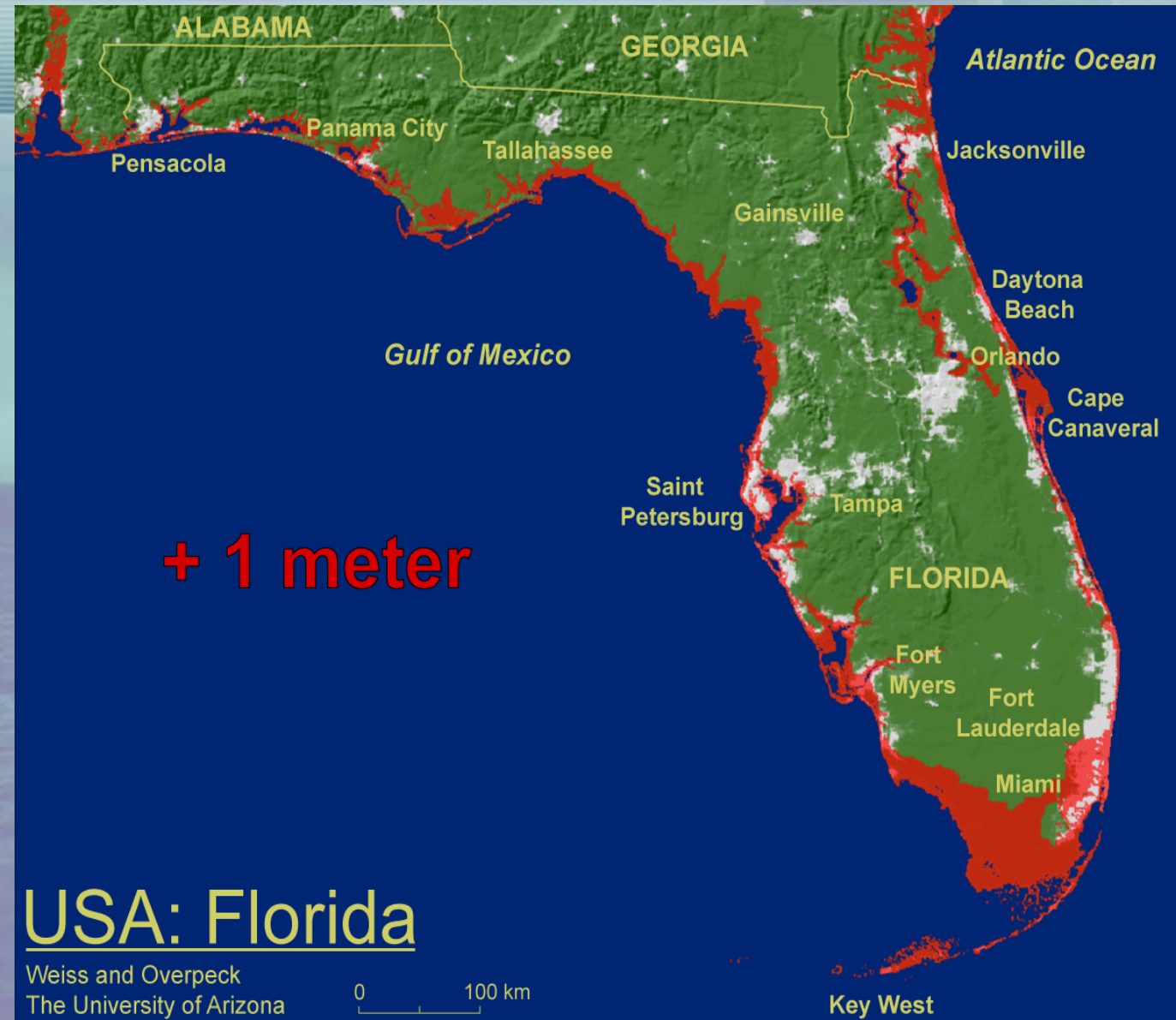


Palm Beach Post



# Sea Level Rise

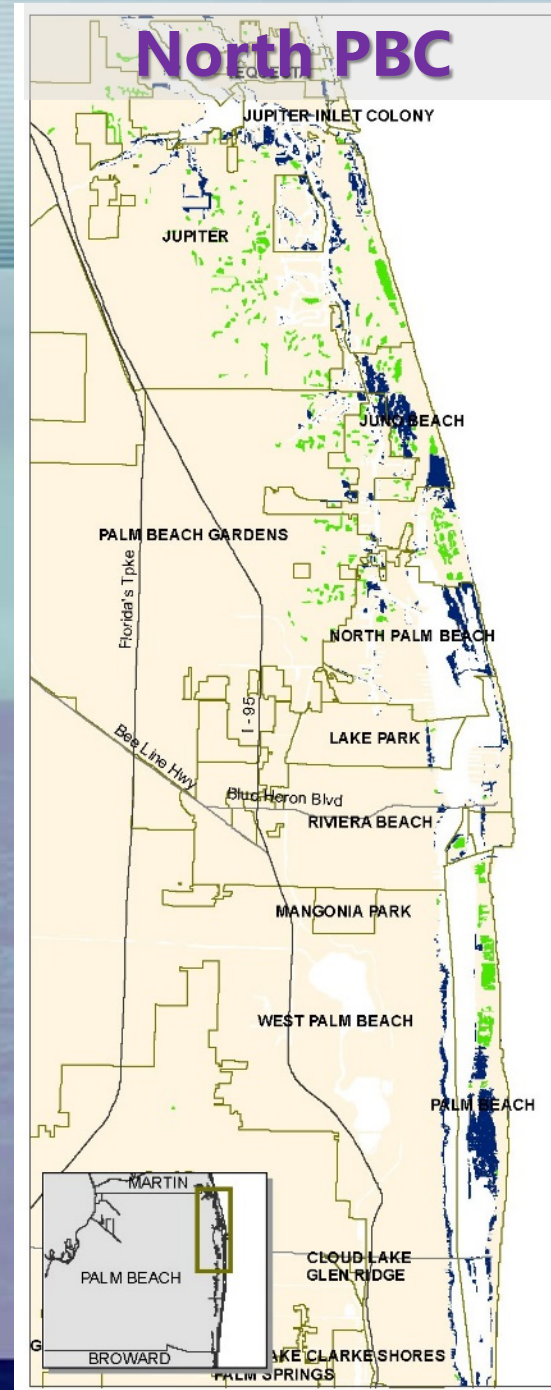
- 4.3% total land area affected
  - 56,000 acres





# Sea Level Rise

- 23 of 39 municipalities
  - Juno Beach
  - Palm Beach
  - Boynton Beach
  - Delray Beach



# Sea Level Rise consequences

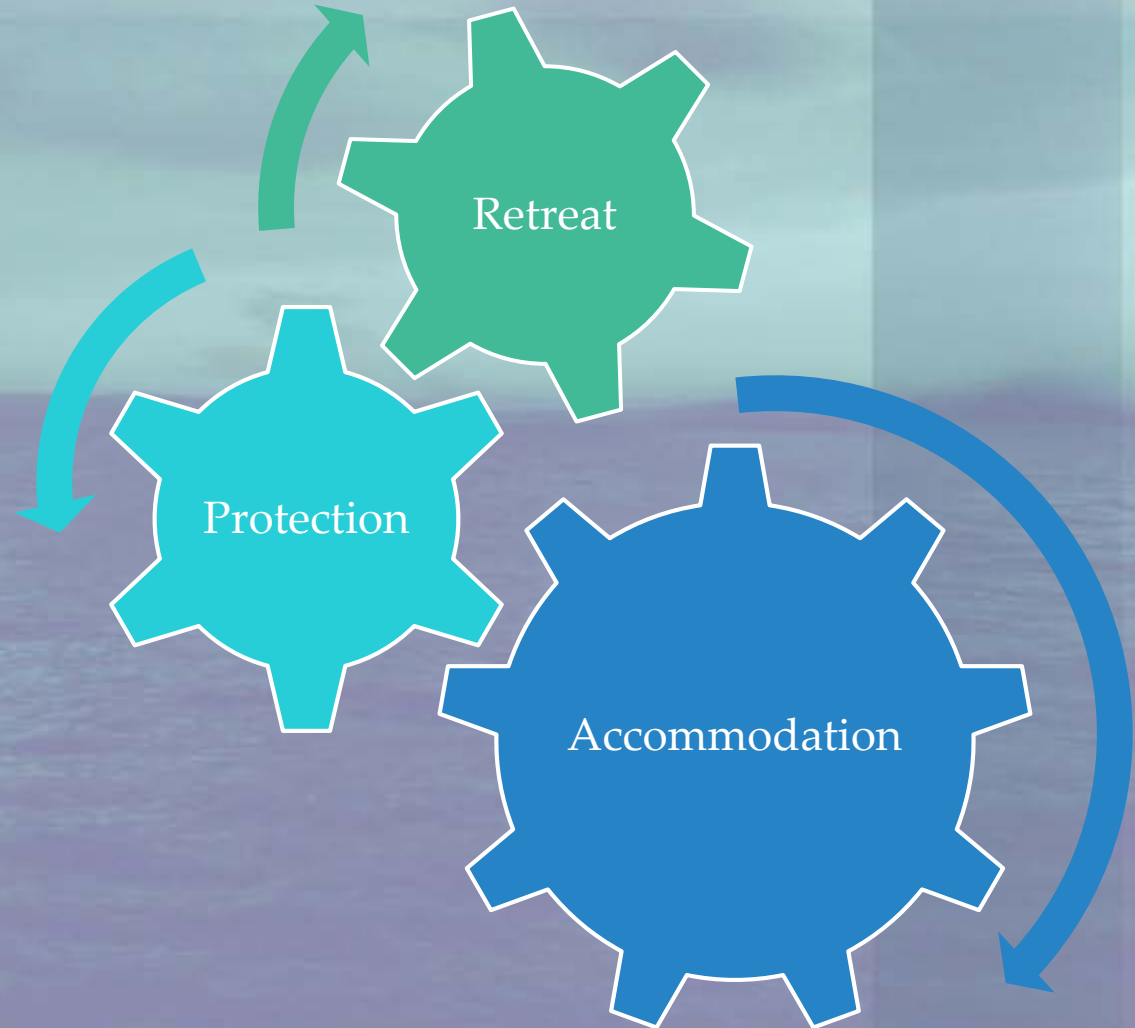
- ◉ Beach and dune erosion
- ◉ Progressive saltwater intrusion into critical fresh water sources
- ◉ Drainage system impacts
- ◉ Insurance availability





# Sea Level Rise Action Plan

- Retreat
- Protection
- Accommodation



# Sea Level Rise Action Plan

- ◉ Adapt the Comprehensive Plan to consider coastal management
  - Reduce coastal land use densities
- ◉ Evaluate the need for Adaption Action Areas
  - Creation of conservation areas





# Sea Level Rise Action Plan

- Implement shoreline stabilization strategies
- Develop Water Management Plan to incorporate storm water improvements
- Post-disaster, reprioritize land acquisitions to support adaptation strategies



Palm Beach Post





# Sea Level Rise

- ◉ Palm Beach County works to address the effects of Sea Level Rise:
  - Beach renourishment
  - Local flooding
  - Water management



Palm Beach Post





# Beach renourishment

- Major beach renourishment projects funded by Palm Beach County ERM and the Army Corps of Engineers



# Local Mitigation Strategy

- ◉ LMS Project Prioritization List (PPL)
  - 83 total projects
  - Top six (6) are flood mitigation projects
  - \$3.3 million
  - 60% of all projects address local flood mitigation
  - Nine (9) projects specifically address Sea Level Rise



## Local Mitigation Strategy 2015



Palm Beach County  
Public Safety Department  
Division of Emergency Management  
20 South Military Trail  
West Palm Beach, FL 33415  
561-712-6400





# Local Mitigation Strategy

## HMGP projects

- *Hurricane Matthew* → \$425,000
  - Indian Trails Improvement District - \$400,000
  - Palm Springs - \$57,000
- *Hurricane Irma* → \$15.7 million
  - Projects yet to be funded by FEMA



## Local Mitigation Strategy 2015



Palm Beach County  
Public Safety Department  
Division of Emergency Management  
20 South Military Trail  
West Palm Beach, FL 33415  
561-712-6400



# LMS/SLR projects

- ◉ Boynton Beach
  - Storm water drainage
- ◉ Delray Beach
  - Marine Way
  - Thomas Street
  - Basin Street
- ◉ West Palm Beach
  - Lift stations
  - Storm sewer retrofits



WPTV-5





# LMS/SLR projects

- ◉ Lake Worth
  - Wellesley Drive
  - Holy Cross Lane
  - 19<sup>th</sup> Avenue, North
  - 17<sup>th</sup> Avenue, South



WPTV-5





# Moving forward...

- ◉ LMS → flood mitigation
- ◉ Post-disaster, reprioritization to support adaptation strategies
- ◉ Revise the PDRP



Palm Beach Post





# Moving forward...

- National Flood Insurance Program's (NFIP) Community Rating System (CRS)



Jog Road, January 10, 2014





**Bill Johnson, RN,  
Director**

Palm Beach County  
Division of Emergency  
Management  
20 So. Military Trail  
W. Palm Beach, FL 33415  
561.712.6321

[wpjohnson@pbcgov.org](mailto:wpjohnson@pbcgov.org)

**THANK  
YOU**

