

UNIVERSITY OF MIAMI  
SCHOOL of  
ARCHITECTURE

---



# RESILIENT REDESIGN III

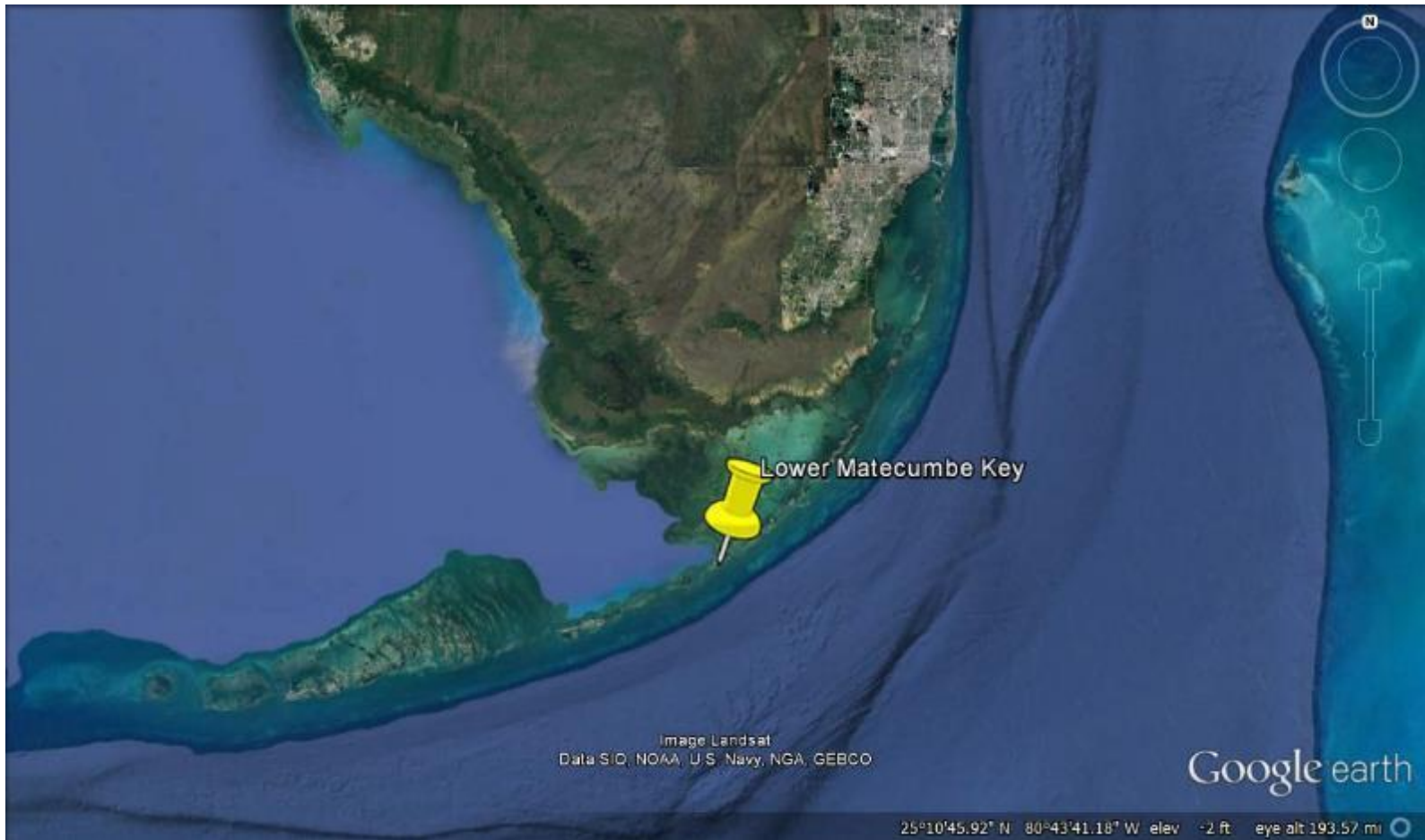
2016 Resilient Redesign Workshop

*Presented By: Chris Bergh and Susan Sprunt*

*November 15, 2016*

# LOWER MATECUMBE KEY

## Village of Islamorada, Monroe County, Florida



# LOWER MATECUMBE KEY

- Westernmost of 4 Islamorada islands
- Population 900
- 4.5 miles x 0.6 miles to 200 feet
- Residential and light commercial
- US Highway 1



# LANDCOVER

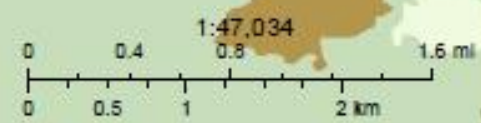
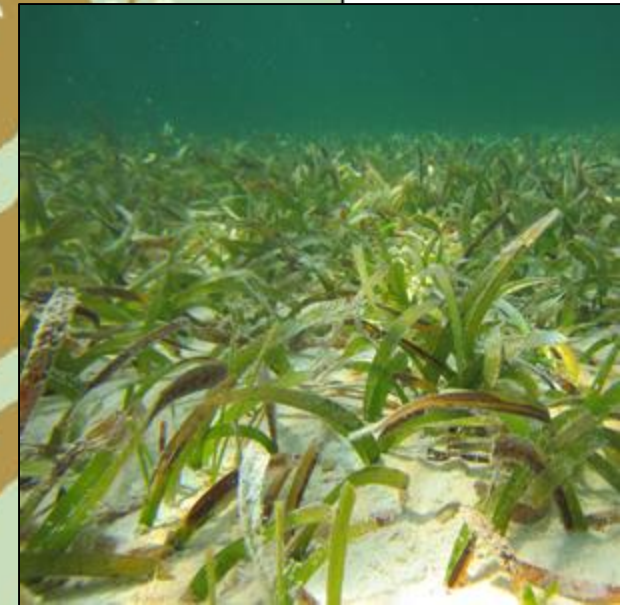


# SEAFLOOR



Unified Reef Map v1.3  
Level 0

- Coral Reef and Hardbottom
- Seagrass
- Unconsolidated Sediment
- Artificial
- Dredged/Exc...



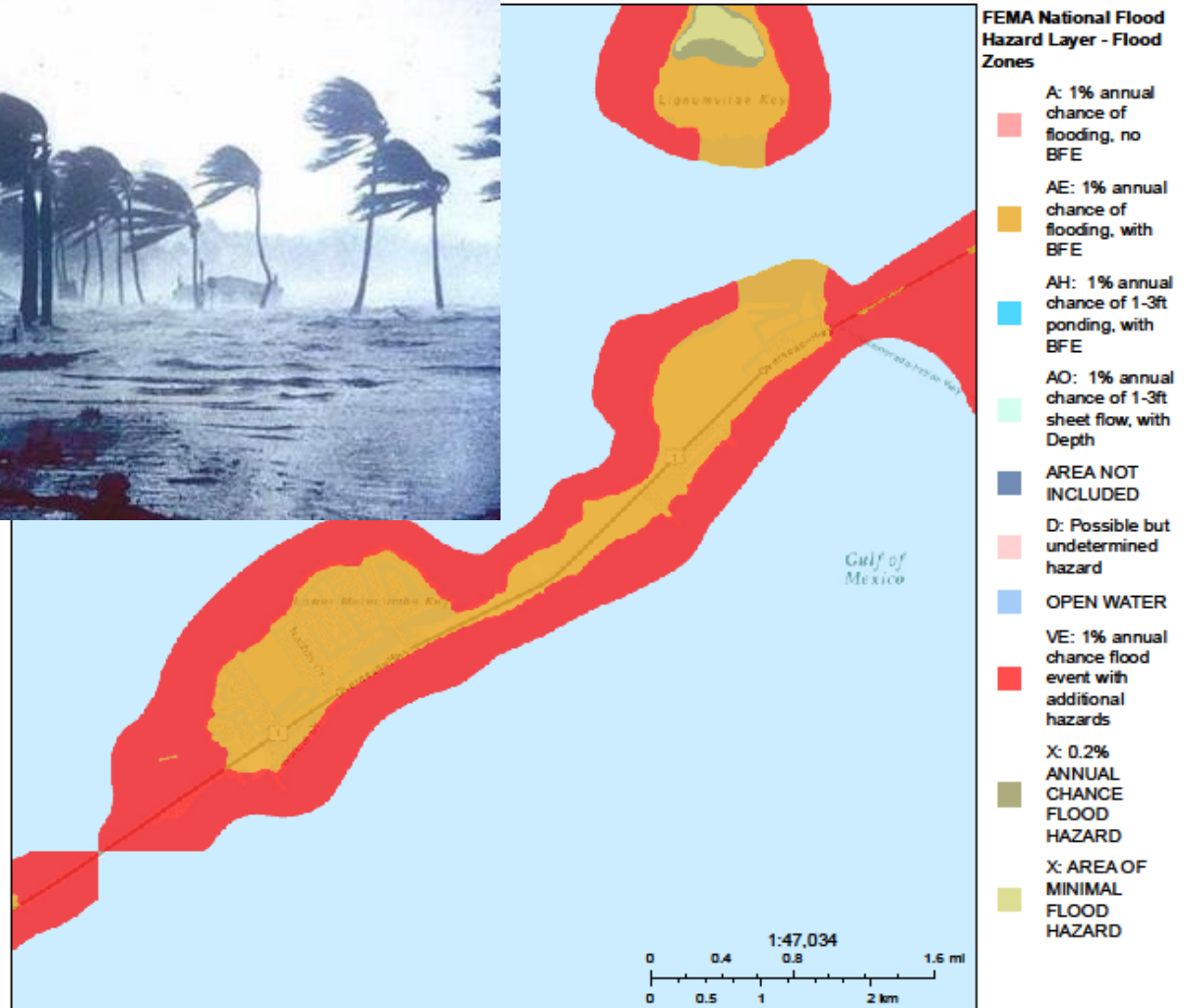
# MARINE LIFESTYLE AND INDUSTRIES



# HURRICANE/EROSION/FLOODING VULNERABILITY



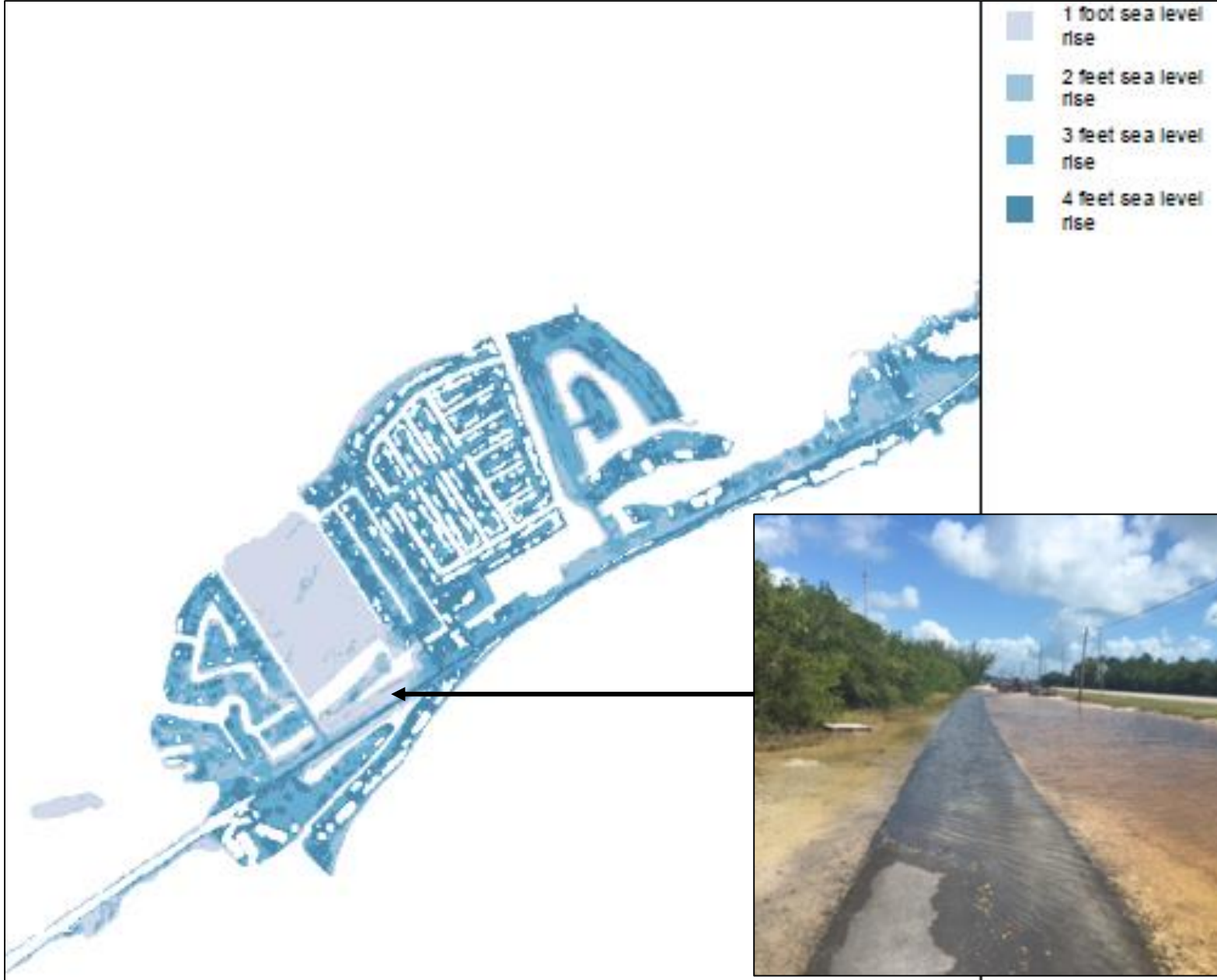
LMK FEMA Flood Hazard



October 6, 2016

Sources: Esri, HERE, DeLorme, Intermap, increment P Corp., GEBCO, USGS, FAO, NPS, NRCAN, GeoBase, IGN, Kadaster NL, Ordnance Survey, Esri Japan, METI, Esri China (Hong Kong), Swisstopo, MapmyIndia, © OpenStreetMap contributors, Swisstopo

# SEA LEVEL RISE VULNERABILITY





# 4 FOCAL AREAS

1. Potential Residential

2. Waterway Connectivity

3. Existing Residential

4. Sea Oats Beach/US1 Exposure



# POTENTIAL RESIDENTIAL AT PARMELEE ESTATE



# WATERWAY CONNECTIVITY OPPORTUNITIES



# EXISTING RESIDENTIAL



# SEA OATS BEACH/US1 EXPOSURE



# SEA OATS BEACH/US1 EXPOSURE





UNIVERSITY OF MIAMI  
SCHOOL of  
ARCHITECTURE

---



# THANK YOU

Chris Bergh

[cbergh@tnc.org](mailto:cbergh@tnc.org)

305.872.7071

Susan Sprunt

[Susan.sprunt@islamorda.fl.us](mailto:Susan.sprunt@islamorda.fl.us)

305.664.6427

# TITLE OF SLIDE





- Land Cover (2008-2009)**
- Agriculture
  - Bare/Exposed
  - Beaches and Flats
  - Developed
  - Exotics
  - Forested Wetland
  - Freshwater Marsh
  - Herbaceous or Open Land
  - Mangrove
  - Non-forested Wetland
  - Salt Marsh
  - Upland Forest
  - Upland Shrub or Brush
  - Water

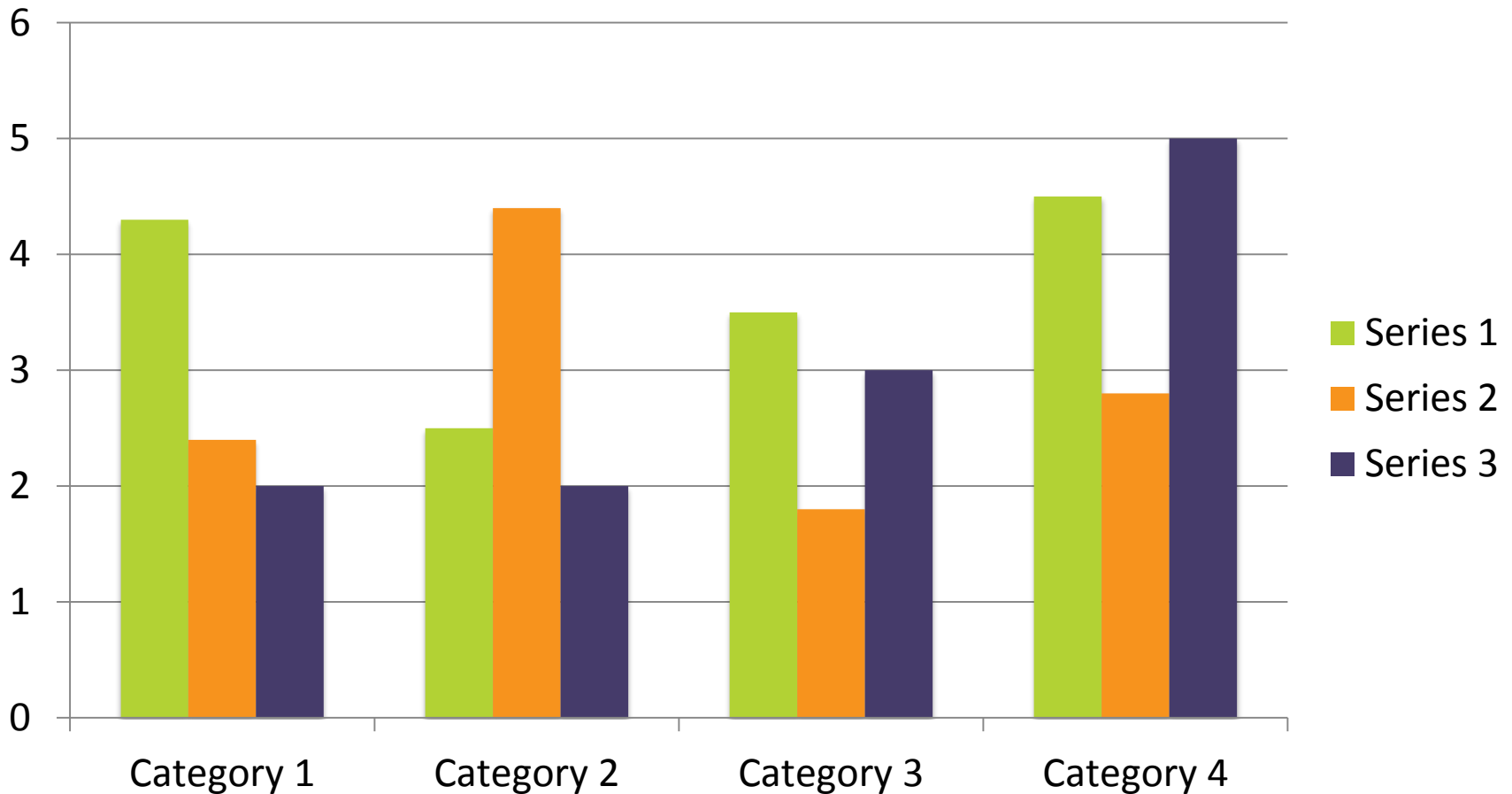


**Shoreline Description**

- Beach (fine, medium, coarse)
- Beach and vegetated shoreline (vegetation in back or front of beach)
- Man made structure and beach
- Man made structure and riprap
- Man made structure and vegetation
- Riprap
- Riprap and beach
- Riprap and vegetation
- Vegetated or other types of shoreline

# CHART TREATMENT

Insert Subtitle Here



# SEA OATS BEACH/US1 EXPOSURE

