

# Islamorada Matters Plan



Cheryl Cioffari, AICP, Director of Planning



## The Team

Islamorada residents, property and business owners

Islamorada Village Council

Islamorada Staff

Erin L. Deady, Esq., AICP, LEED AP

Jason Evans, PhD, Stetson University

The Nature Conservancy

VHB /Miller Sellen

Catalysis Adaption Partners

Quest Ecology

### 3 Workshops: We Evaluated Avoided Damage and Low/High Cost of 3 Adaptation Strategies

	Benefit/Cost Ratios – Using Low Cost Estimate	
	Low SLR	High SLR
Action 1: Elevate & Floodproof	10.75	15.28
Action 2: Construct Breakwater	2.12	2.2
Action 3: Voluntary Relocation 10% Participation Now, 50% in 2030	0.44	0.07

	Benefit/Cost Ratios – Using High Cost Estimate	
	Low SLR	High SLR
Action 1: Elevate & Floodproof	5.24	7.46
Action 2: Construct Breakwater	1.59	1.65
Action 3: Voluntary Relocation 10% Participation Now, 100% in 2030	0.12	0.02

The higher the number above 1.0, the greater benefit comparison to cost (caveats for voluntary relocation)

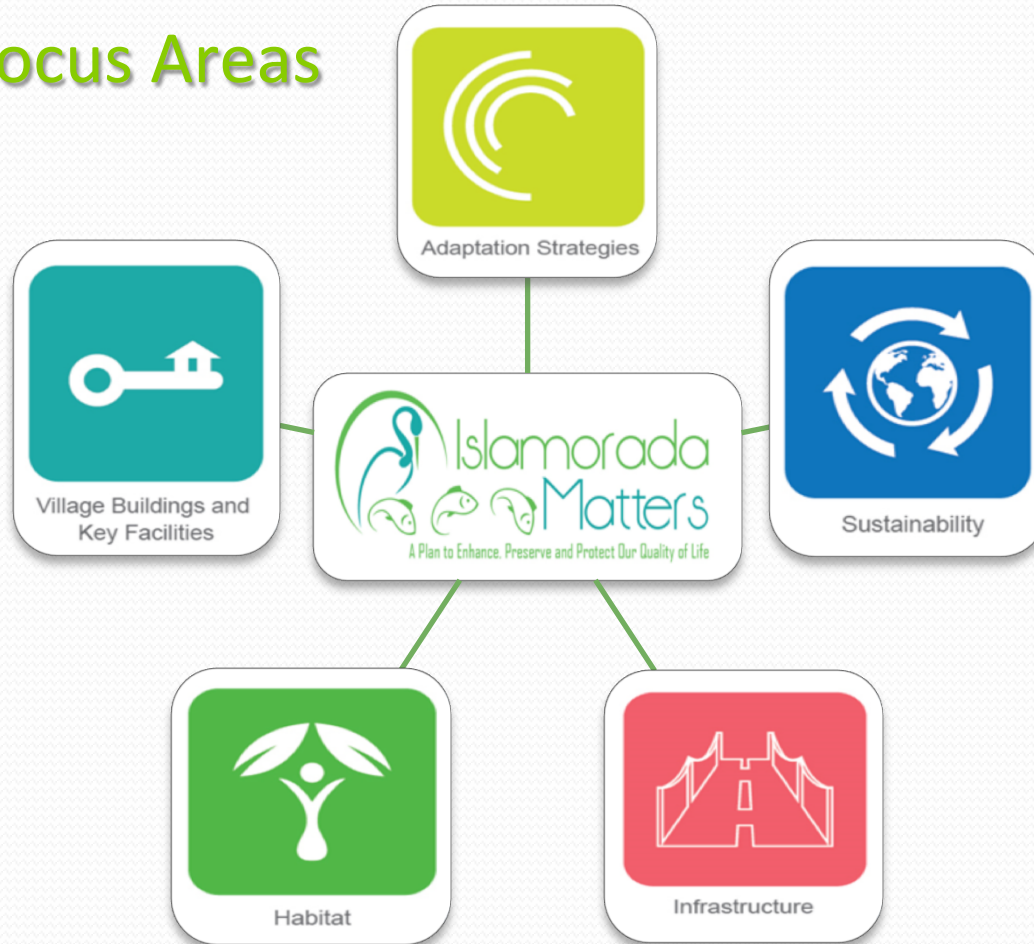
# How Can the Village Prepare for Sea Level Rise?

1. Understand infrastructure and habitat vulnerabilities
2. Address critical near-term vulnerabilities first
3. Minimize new problems through planning & incorporate resilience to flooding and sea level rise as a core concern in all Village projects and operations



Photo Credit: Ariana Lawson

# Plan Focus Areas





# How did we Develop Plan Recommendations?

- Islamorada Matters Plan has a total of **62 recommendations**.
- To develop recommendations we used:
  - Best practices research from other resiliency initiatives, planning efforts and policies
  - Team judgment based on data (such as for specific facilities)
  - Survey results and free responses
  - Workshop input
  - Staff briefings and input



Photo Credit: Ariana Lawson

## What Could This Mean?



- *Policy shifts*
- *New approach to capital improvements*
- *Elevating properties*
- *Better data to make decisions*

# Regional Climate Action Plan Recommendations

SP-2: Develop policies, strategies and standards that will serve as guidance for climate change related planning efforts. Municipal and county planning authorities are encouraged to develop policies to improve resilience to coastal and inland flooding, salt water intrusion, and other related impacts of climate change and sea level rise in their Comprehensive Plans, Sustainability Action Plans, Vision Plans, Stormwater Master Plans, Transit Development Plans, Long Range Transportation Plans, Adaption Action Area Plans, Climate Change Plans and other greening efforts.